

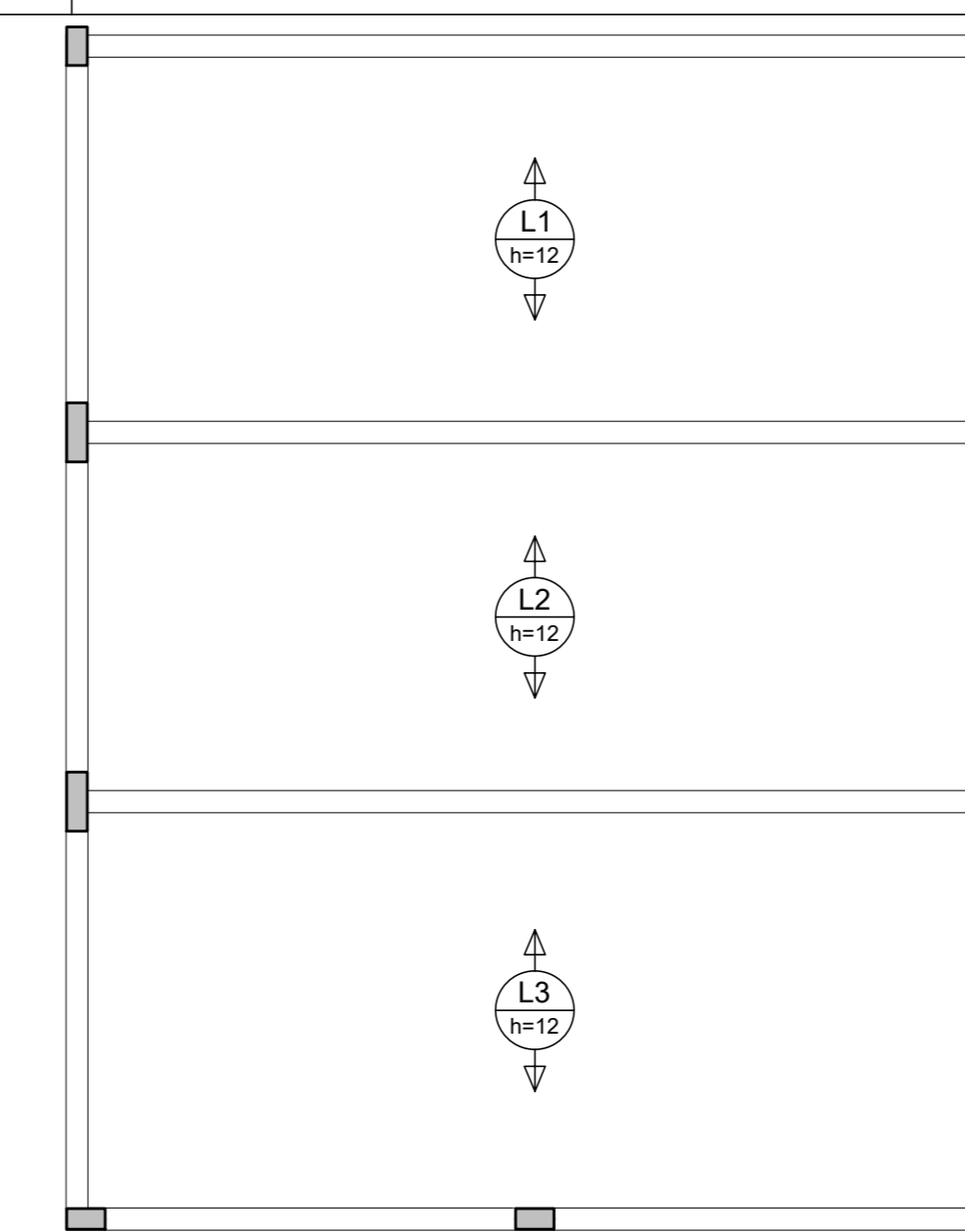
Forma do pavimento BALDRAME (Nível 0) escala 1:50

Nome	Seção (cm)	Elevação (cm)	Nível (cm)
VB1	15x30	0	0
VB2	15x30	0	0
VB3	15x30	0	0
VB4	15x30	0	0
VB5	15x30	0	0
VB6	15x30	0	0
VB7	15x30	0	0
VB8	15x30	0	0
VB9	15x30	0	0
VB10	15x30	0	0
VB11	15x30	0	0
VB12	15x30	0	0
VB13	15x30	0	0
VB14	15x30	0	0
VB15	15x30	0	0
VB16	15x30	0	0
VB17	15x30	0	0

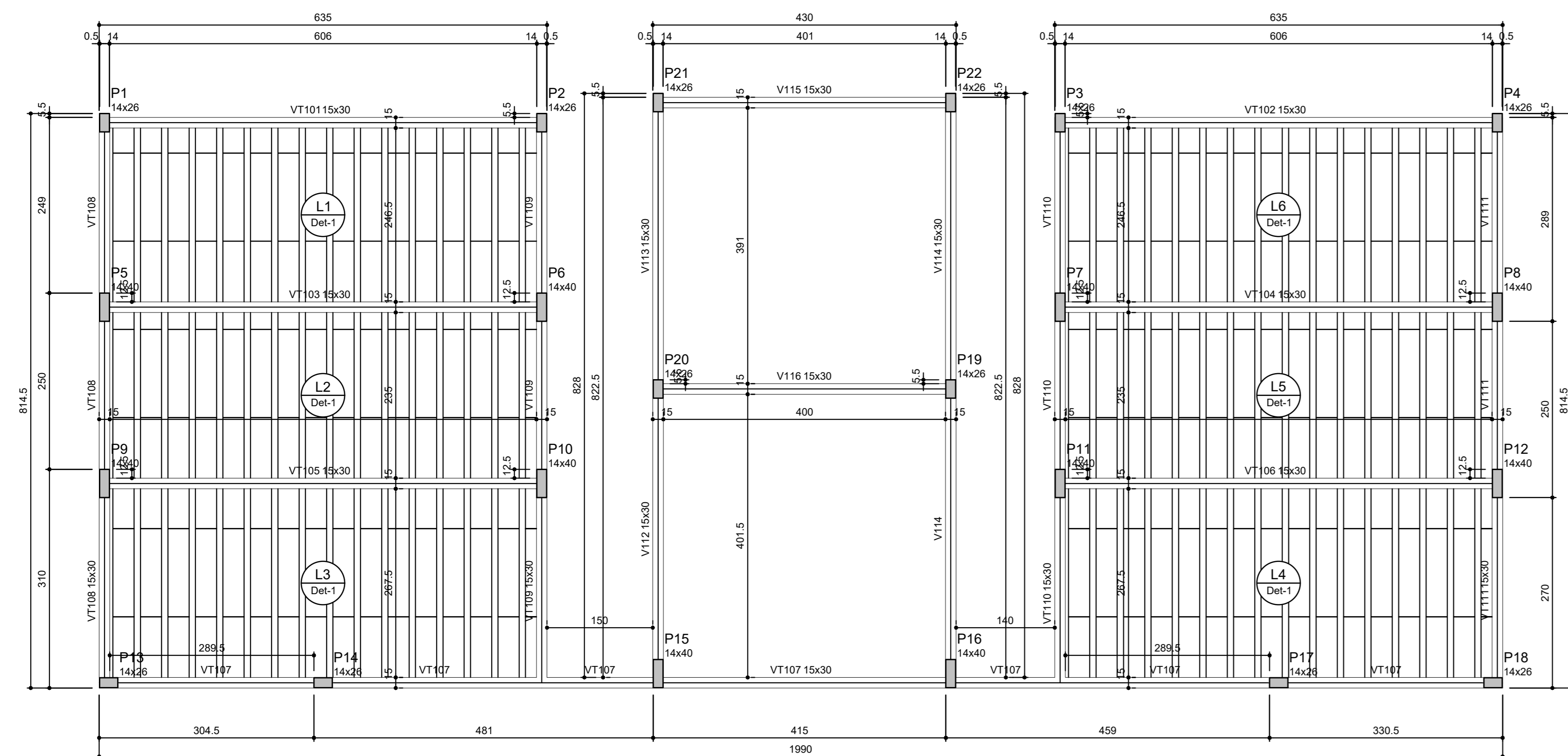
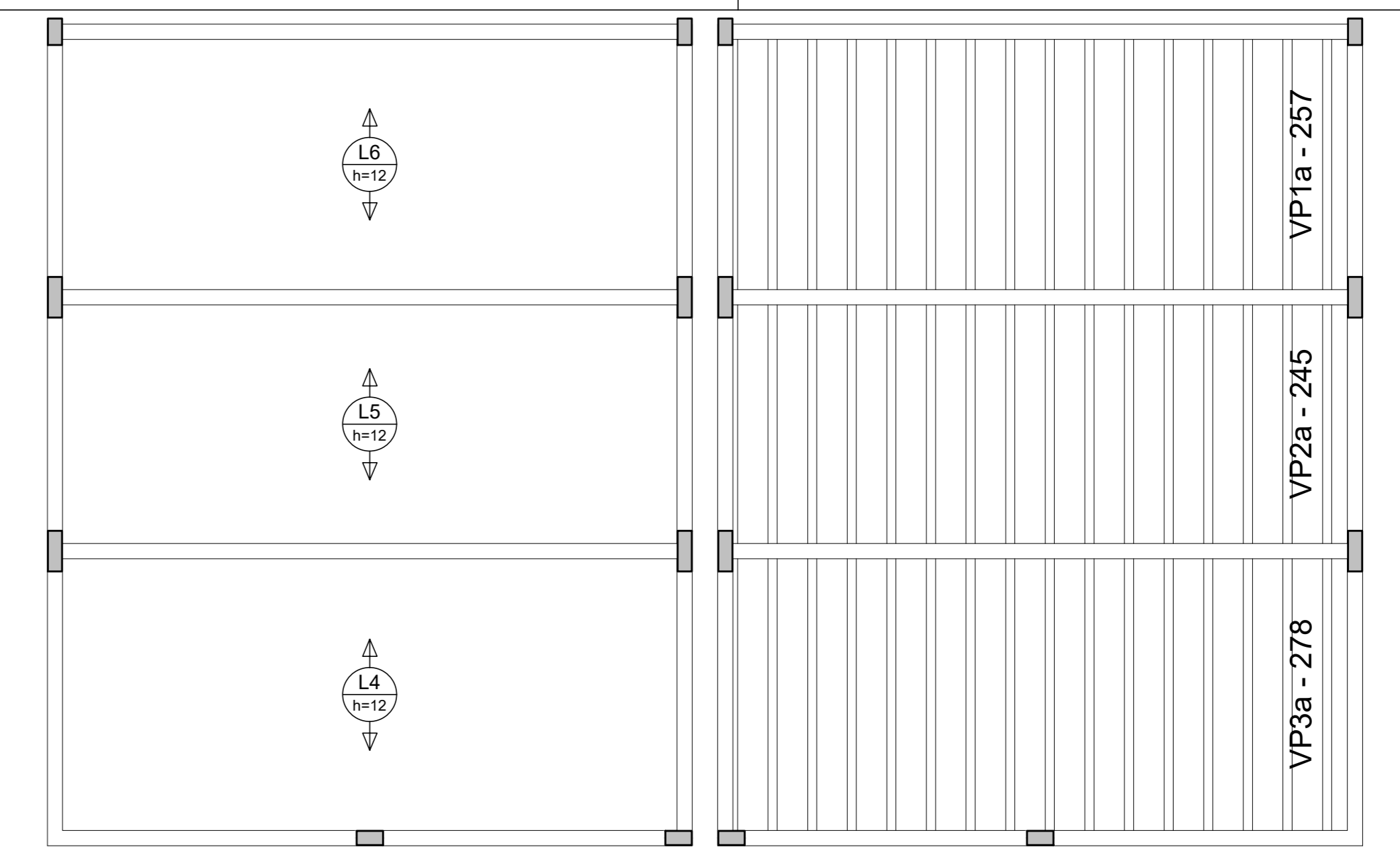
Características dos materiais		
fck	Ecs	(kgf/cm²)
250	241500	

Nome	Seção (cm)	Elevação (cm)	Nível (cm)
P1	14 x 26	0	0
P2	14 x 26	0	0
P3	14 x 26	0	0
P4	14 x 26	0	0
P5	14 x 26	0	0
P6	14 x 26	0	0
P7	14 x 26	0	0
P8	14 x 26	0	0
P9	14 x 26	0	0
P10	14 x 26	0	0
P11	14 x 26	0	0
P12	14 x 26	0	0
P13	14 x 26	0	0
P14	14 x 26	0	0
P15	14 x 40	0	0
P16	14 x 40	0	0
P17	14 x 26	0	0
P18	14 x 26	0	0
P19	14 x 26	0	0
P20	14 x 26	0	0
P21	14 x 26	0	0
P22	14 x 26	0	0

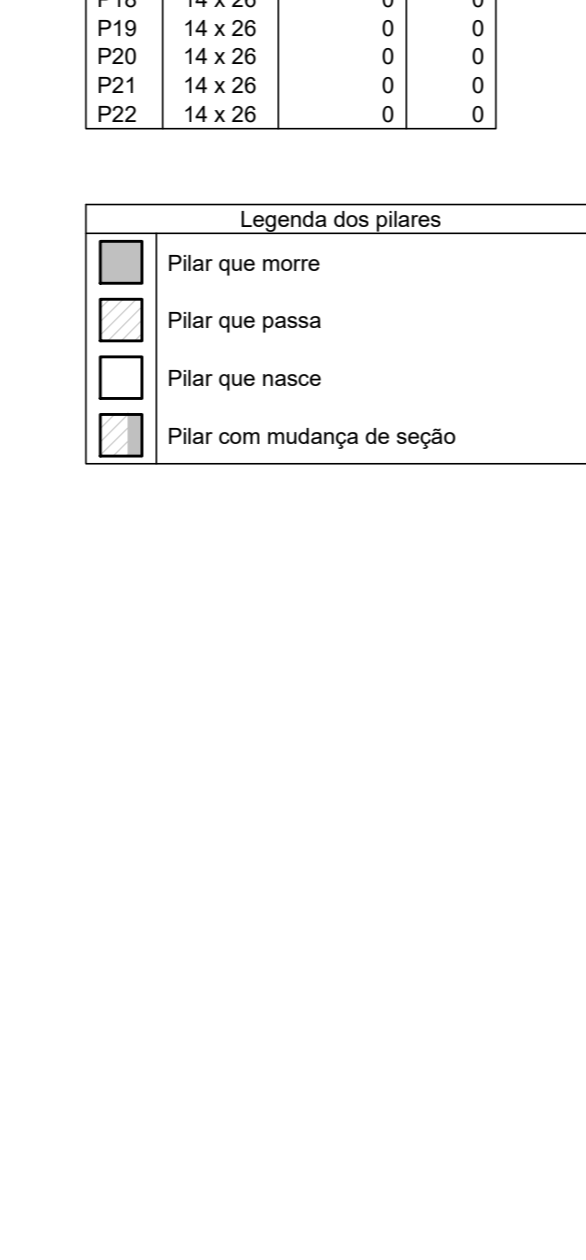
Legenda dos pilares			
	Pilar que morre		
	Pilar que passa		
	Pilar que nasce		
	Pilar com mudança de seção		



Armação positiva das lajes do pavimento TERREO (Eixo Y) escala 1:50

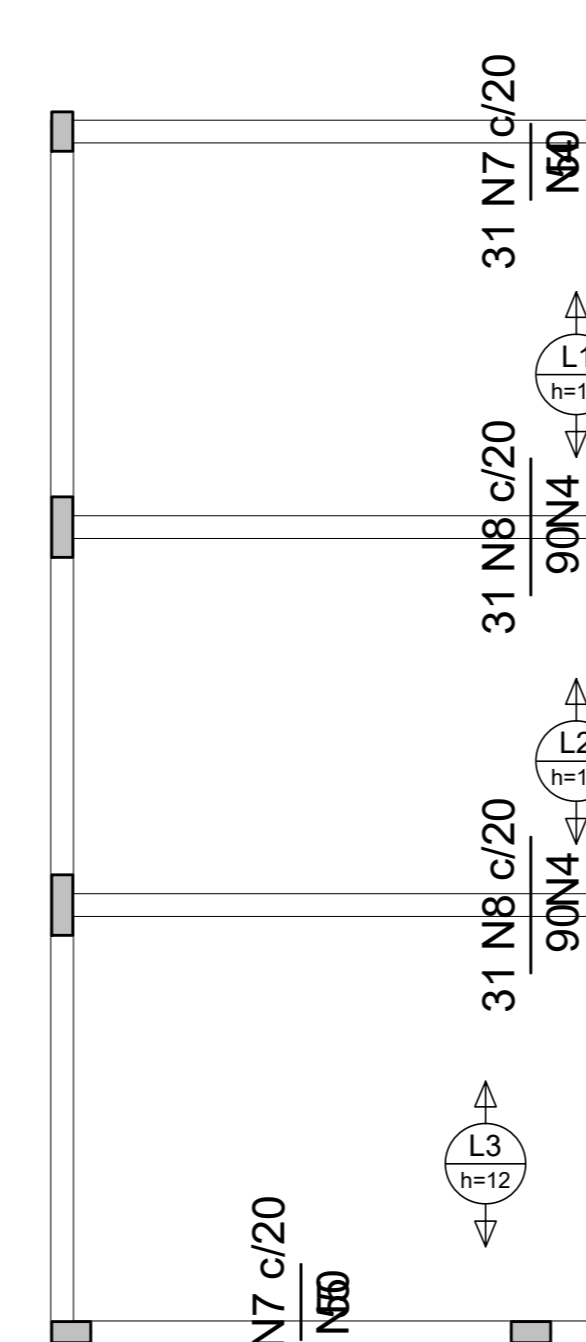


Forma do pavimento TERREO (Nível 300) escala 1:50



Armação negativa das lajes do pavimento TERREO (Eixo X) escala 1:50

Feros de distribuição	
Ferro	Armadura de distribuição
N7	3 N1 ø5.0 c/20 C=247
N7	3 N1 ø5.0 c/20 C=247
N7	3 N2 ø5.0 c/20 C=228
N7	3 N2 ø5.0 c/20 C=228
N7	3 N3 ø5.0 c/20 C=272
N7	3 N3 ø5.0 c/20 C=272
N7	3 N3 ø5.0 c/20 C=272
N7	3 N2 ø5.0 c/20 C=228
N7	3 N2 ø5.0 c/20 C=228
N7	3 N1 ø5.0 c/20 C=247
N7	3 N1 ø5.0 c/20 C=247



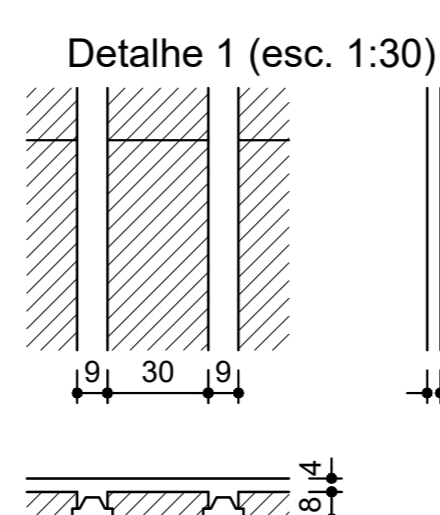
Armação negativa das lajes do pavimento TERREO (Eixo Y) escala 1:50

Feros de distribuição	
Ferro	Armadura de distribuição
N7	3 N4 ø5.0 c/20 C=620
N8	5 N4 ø5.0 c/20 C=620
N8	5 N4 ø5.0 c/20 C=620
N7	3 N5 ø5.0 c/20 C=296
N7	3 N6 ø5.0 c/20 C=306
N7	3 N6 ø5.0 c/20 C=306
N7	3 N5 ø5.0 c/20 C=296
N8	5 N4 ø5.0 c/20 C=620
N8	5 N4 ø5.0 c/20 C=620
N7	3 N4 ø5.0 c/20 C=620

Vigas			
Nome	Seção (cm)	Elevação (cm)	Nível (cm)
V112	15x30	0	300
V113	15x30	0	300
V114	15x30	0	300
V115	15x30	0	300
V116	15x30	0	300
VT101	15x30	0	300
VT102	15x30	0	300
VT103	15x30	0	300
VT104	15x30	0	300
VT105	15x30	0	300
VT106	15x30	0	300
VT107	15x30	0	300
VT108	15x30	0	300
VT109	15x30	0	300
VT110	15x30	0	300
VT111	15x30	0	300

Blocos de enchimento						
Detalhe	Tipo	Nome	Dimensões(cm)			Quantidade
			hb	bx	by	
1	EPS Unidirecional	B8/30/125	8	30	125	288

Pilares			
Nome	Seção (cm)	Elevação (cm)	Nível (cm)
P1	14 x 26	0	300
P2	14 x 26	0	300
P3	14 x 26	0	300
P4	14 x 26	0	300
P5	14 x 40	0	300
P6	14 x 40	0	300
P7	14 x 40	0	300
P8	14 x 40	0	300
P9	14 x 40	0	300
P10	14 x 40	0	300
P11	14 x 40	0	300
P12	14 x 40	0	300
P13	14 x 26	0	300
P14	14 x 26	0	300
P15	14 x 40	0	300
P16	14 x 40	0	300
P17	14 x 26	0	300
P18	14 x 26	0	300
P19	14 x 26	0	300
P20	14 x 26	0	300
P21	14 x 26	0	300
P22	14 x 26	0	300

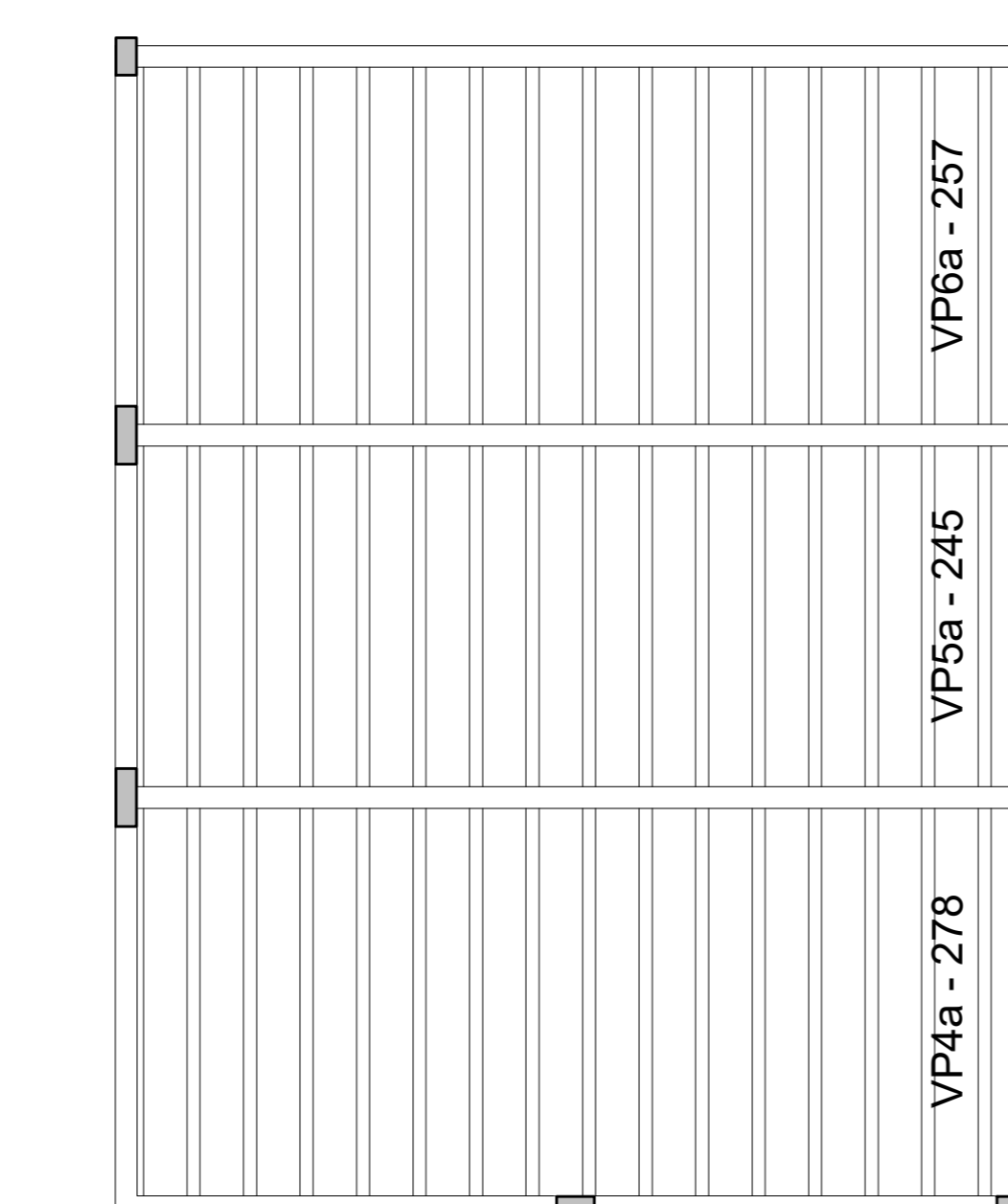


Lajes					
Nome	Tipo	Altura (cm)	Elevação (cm)	Nível (cm)	Sobrecarga (kgf/m²)
L1	Pré-moldada	12	0	300	100
L2	Pré-moldada	12	0	300	100
L3	Pré-moldada	12	0	300	100
L4	Pré-moldada	12	0	300	100
L5	Pré-moldada	12	0	300	100
L6	Pré-moldada	12	0	300	100

Área de lajes			
Tipo	Altura (cm)	Bloco de Enchimento	Área (m²)
Pré-moldada	12	B8/30/125	90.63

Características dos materiais		
fck	Ecs	(kgf/cm²)
250	241500	

Legenda dos pilares			
	Pilar que morre		
	Pilar que passa		
	Pilar que nasce		
	Pilar com mudança de seção		



Planta de vigotas pré-moldadas escala 1:50

RELAÇÃO DO AÇO

Negativos X		Negativos Y			
AÇO	N	DIAM (mm)	QUANT	C.UNIT (cm)	C.TOTAL (cm)
CA60	1	5.0	12	247	2964
	2	5.0	12	228	2736
	3	5.0	12	272	3264
	4	5.0	26	620	16120
	5	5.0	6	296	1776
	6	5.0	6	306	1836
CA50	7	6.3	270	50	13500
	8	6.3	124	90	11160

RESUMO DO AÇO

AÇO	DIAM (mm)	C.TOTAL (m)	PESO + 10% (kg)
CA50	6.3	246.6	66.4
CA60	5.0	287	48.7
PESO TOTAL (kg)			
CA50			66.4
CA60			48.7

Volume de concreto (C-25) = 3.63 m³

PREFEITURA LUZIÂNIA
UM NOVO TEMPO COM RESPEITO E TRABALHO

SMDU
SECRETARIA MUNICIPAL DE DESENVOLVIMENTO URBANO

OBRA: REFORMA DA 1ª ESCOLA POLO MUNICIPAL REALINO CAIXETA
ENDEREÇO: DISTRITO RURAL DE MANIRATUBA, LUZIÂNIA-GO

PROPRIETÁRIO: PREFEITURA MUNICIPAL DE LUZIÂNIA

AUTOR DO PROJETO: TAY LOPEZ LOPES VIEIRA

RESPONSÁVEL TÉCNICO: TAYS LOPES VIEIRA - CREA 28523/O-DF

FISCALIZAÇÃO E LICENÇA: [] CREA/CAU: []

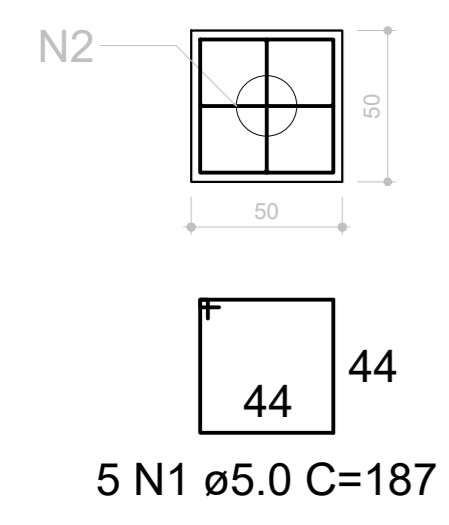
FOLHA: 1/4

CONTEÚDO: PLANTAS, QUADROS E LEGENDAS

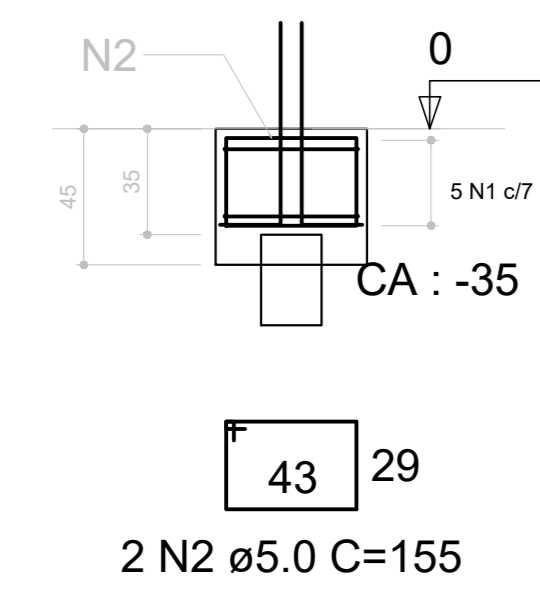
ÁREAS: INDICADA EM QUADRO

DATA: 04/2023 DESENHO: ISABELLE MORAES ESCALA: INDICADA UNIDADE: METROS

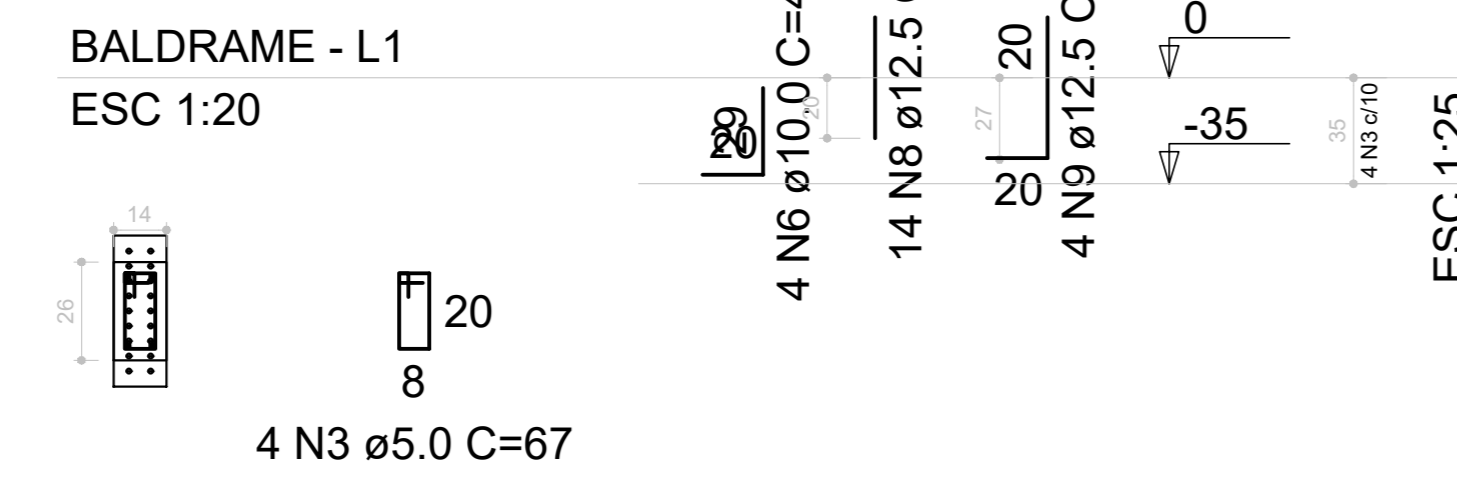
B1=B2=B3=B4=B5=B6=B7=B8=B9=B10=B11=B12
 =B13=B14=B15=B16=B17=B18=B19=B20=B21
 =B22
 1xC20
 PLANTA
 ESC 1:25



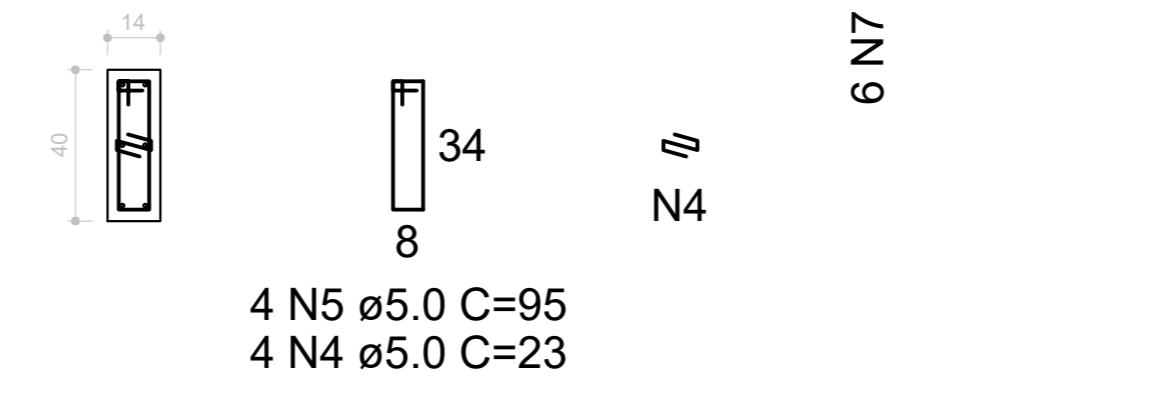
CORTE
 ESC 1:25



P5=P6=P7=P8=P9=P10=P11=P12



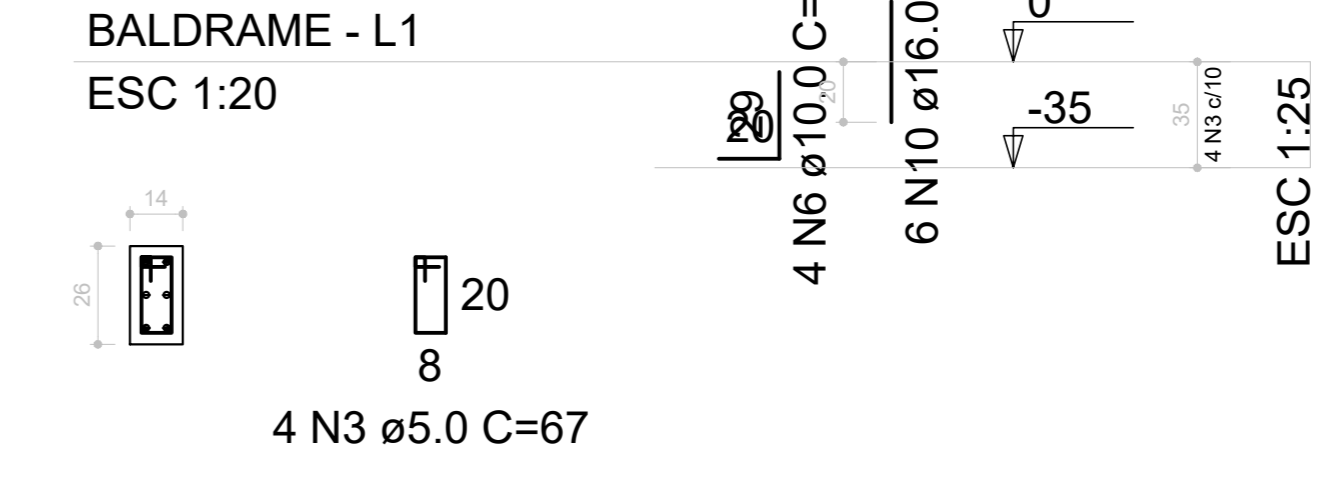
P15=P16
 BALDRAME - L1
 ESC 1:20



P13=P14=P17=P18=P19=P20=
 =P21=P22



P1=P2=P3=P4



RELAÇÃO DO AÇO

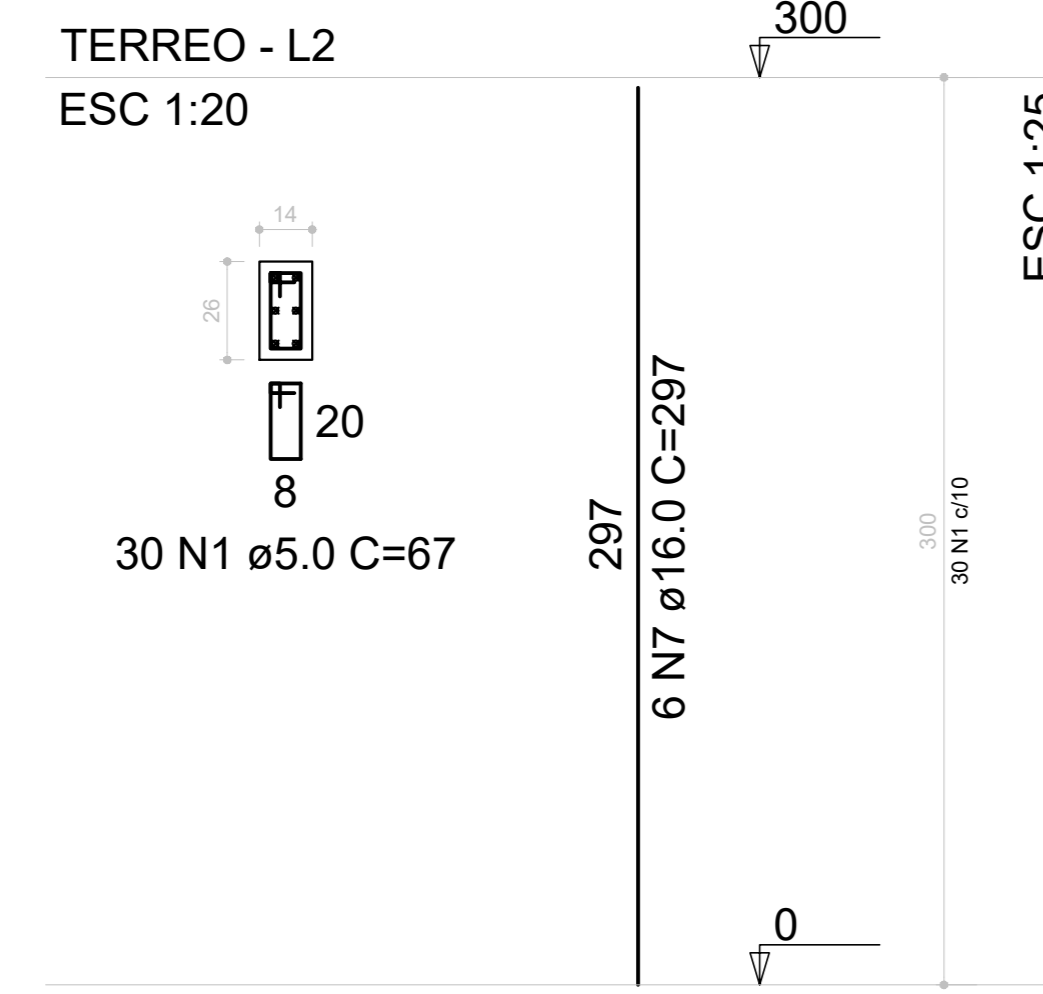
AÇO	N	DIAM (mm)	QUANT	C.UNIT (cm)	C.TOTAL (cm)
CA60	1	5.0	110	187	20570
	2	5.0	44	155	6820
	3	5.0	80	67	5360
	4	5.0	8	23	184
CA50	5	5.0	8	95	760
	6	10.0	48	47	2256
	7	10.0	44	70	3080
	8	12.5	112	40	4480
	9	12.5	32	64	2048
	10	16.0	24	40	960

RESUMO DO AÇO

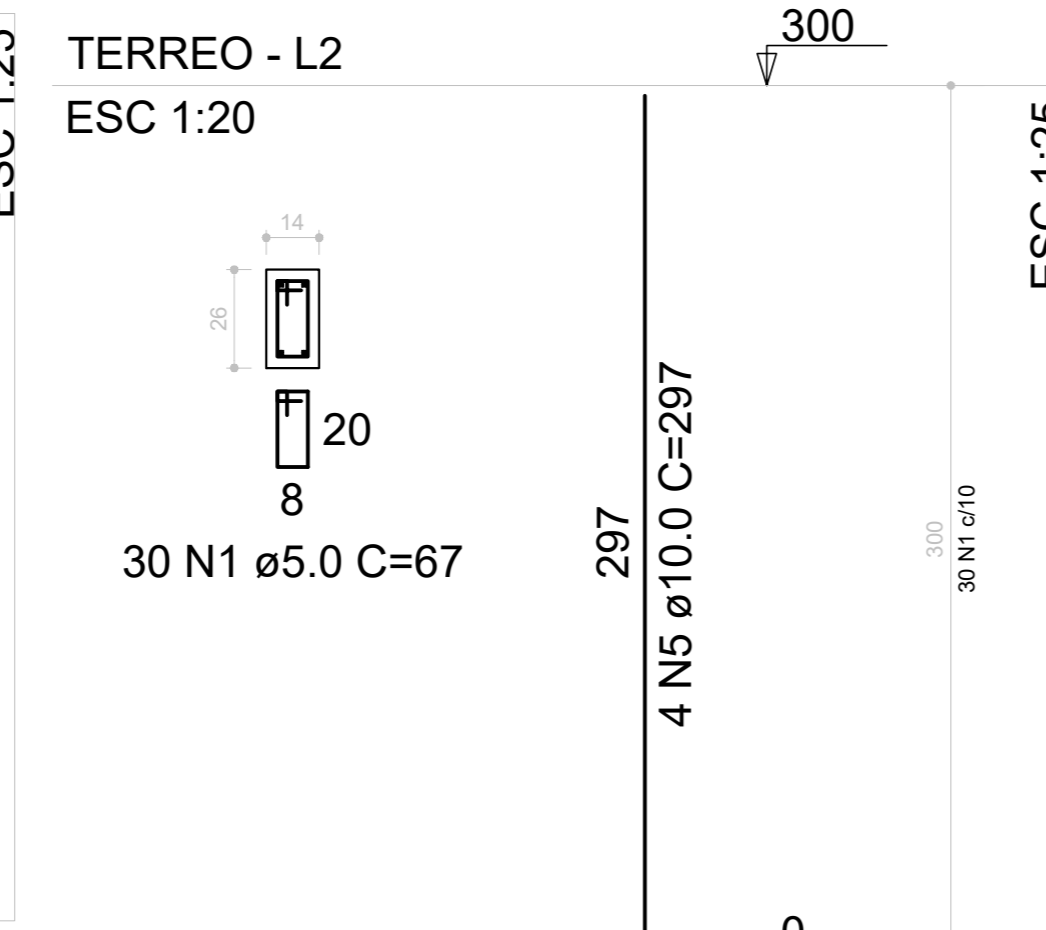
AÇO	DIAM (mm)	C.TOTAL (m)	PESO + 10% (kg)
CA50	10.0	53.4	36.2
	12.5	65.3	69.2
	16.0	9.6	16.7
CA60	5.0	336.9	57.1
PESO TOTAL (kg)			
CA50		122	
CA60		57.1	

Volume de concreto (C-25) = 2.70 m³
 Área de forma = 26.16 m²

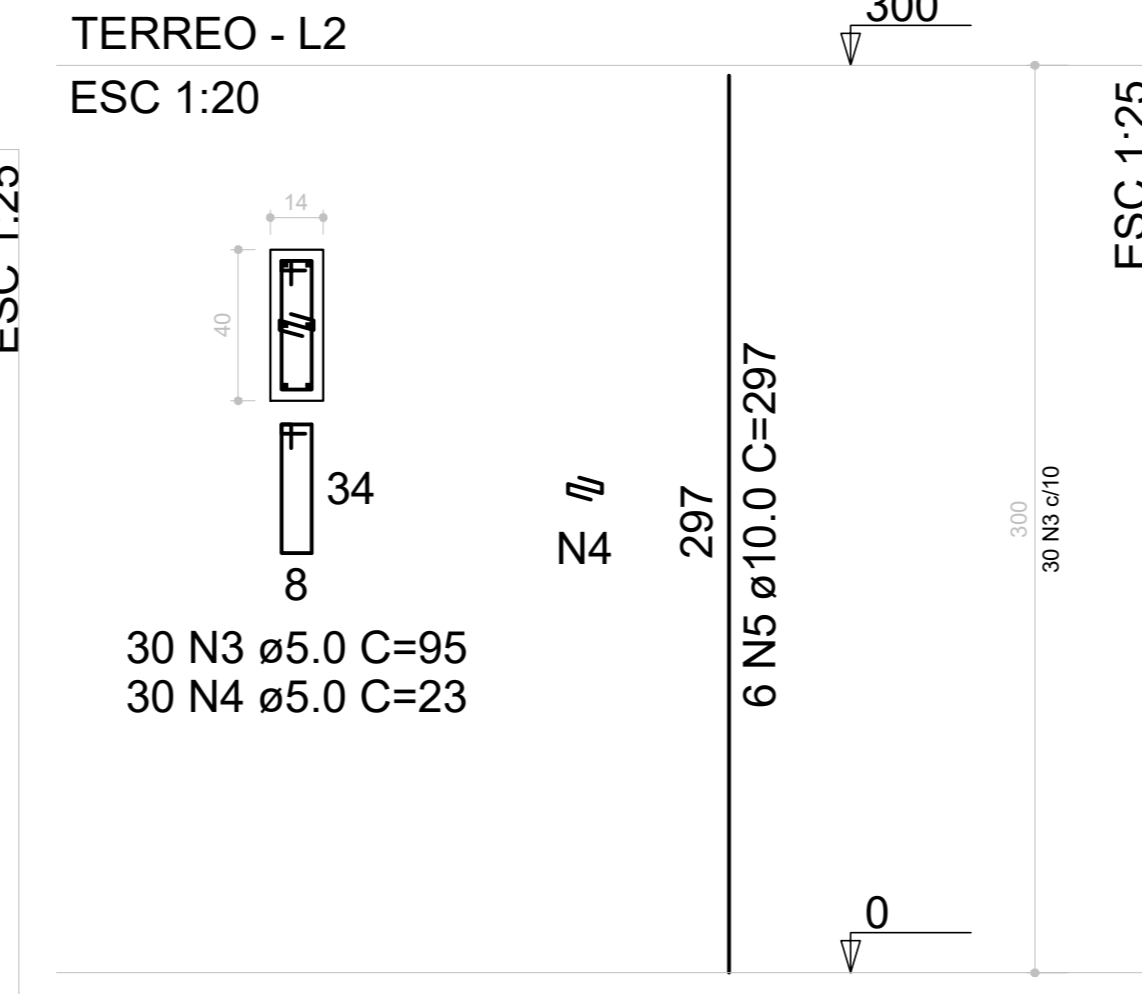
P1=P2=P3=P4



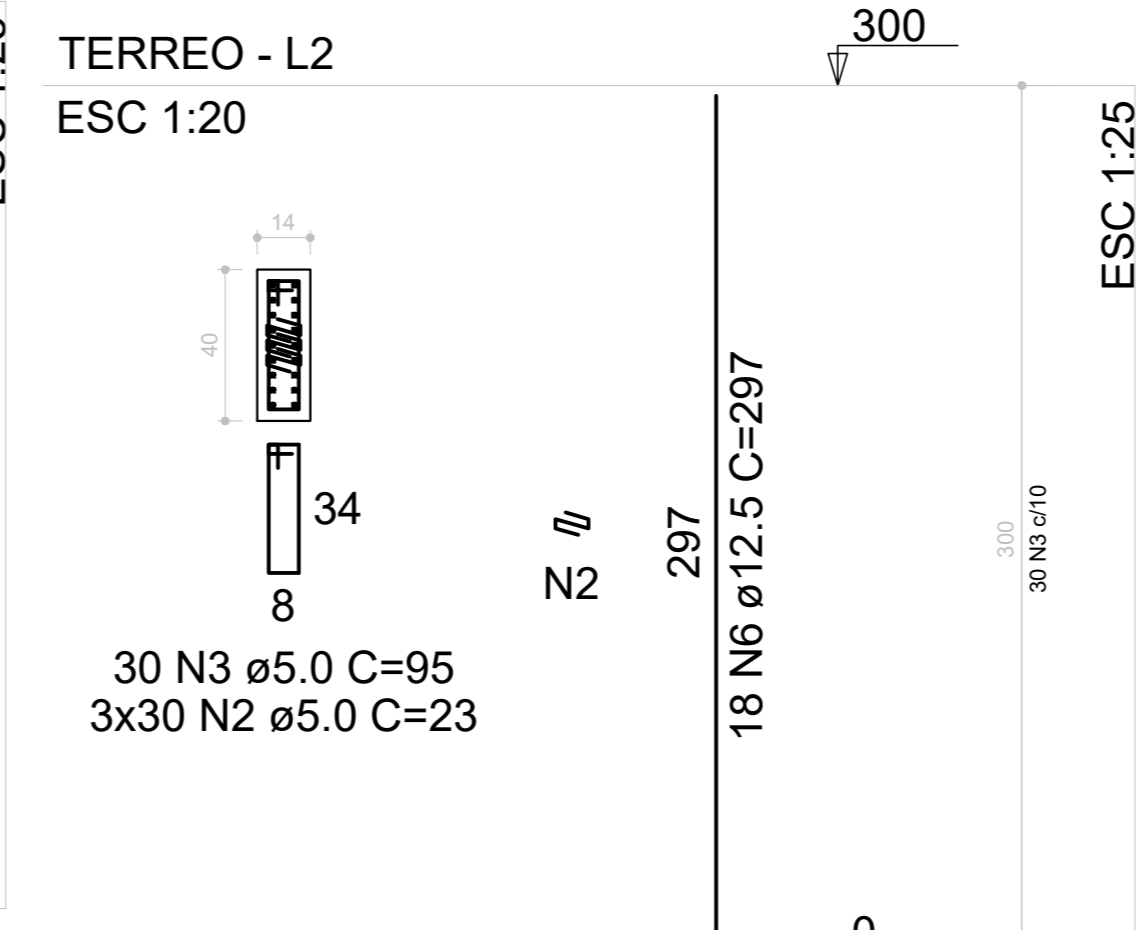
P13=P14=P17=P18=P19=P20=
 =P21=P22



P15=P16



P5=P6=P7=P8=P9=P10=P11=
 =P12



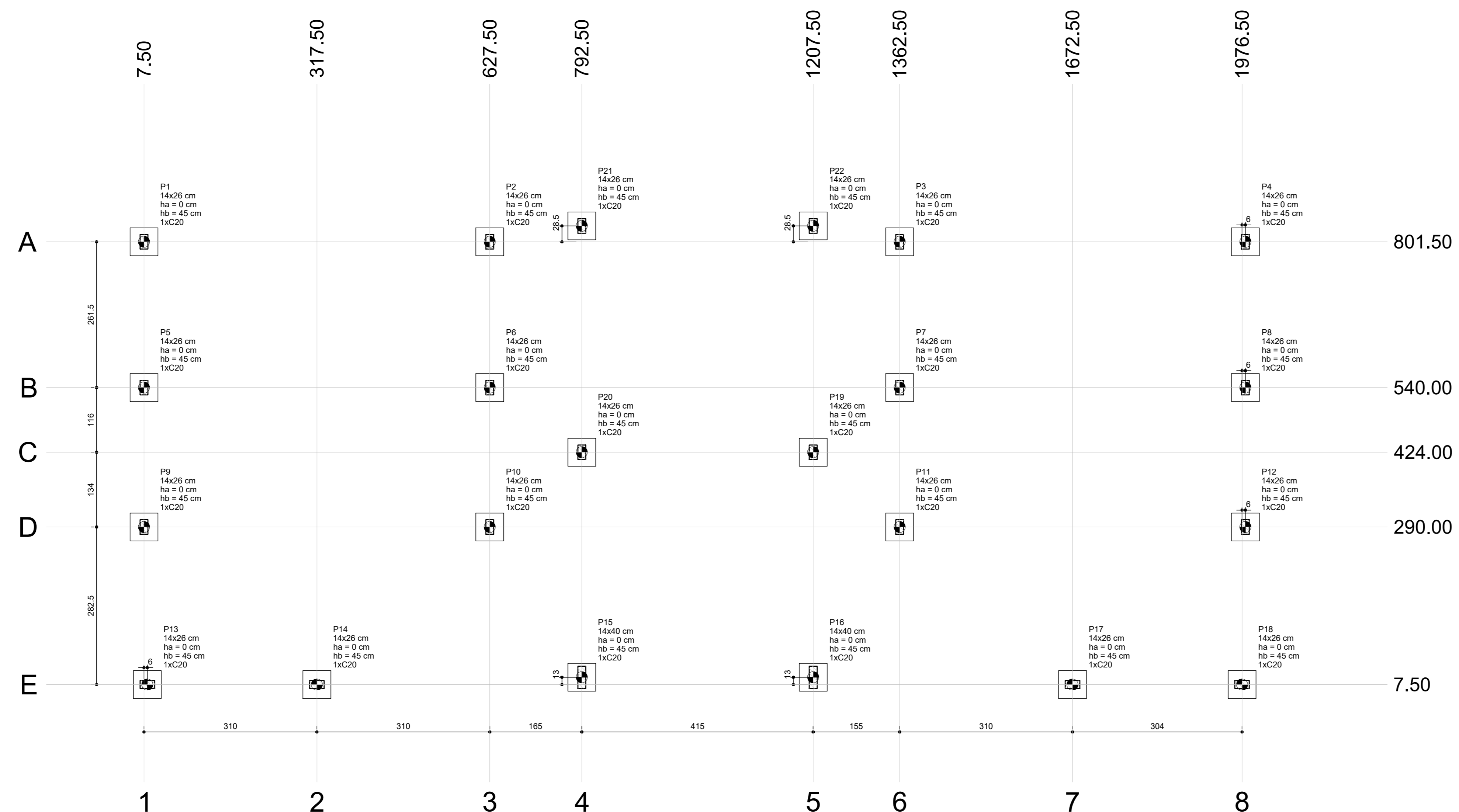
RELAÇÃO DO AÇO

AÇO	N	DIAM (mm)	QUANT	C.UNIT (cm)	C.TOTAL (cm)
CA60	1	5.0	360	67	24120
	2	5.0	720	23	16560
	3	5.0	300	95	28500
	4	5.0	60	23	1380
CA50	5	10.0	44	297	13068
	6	12.5	144	297	42768
	7	16.0	24	297	7128

RESUMO DO AÇO

AÇO	DIAM (mm)	C.TOTAL (m)	PESO + 10% (kg)
CA50	10.0	130.7	88.6
	12.5	427.7	453.2
	16.0	71.3	123.8
CA60	5.0	705.6	119.6
PESO TOTAL (kg)			
CA50		665.6	
CA60		119.6	

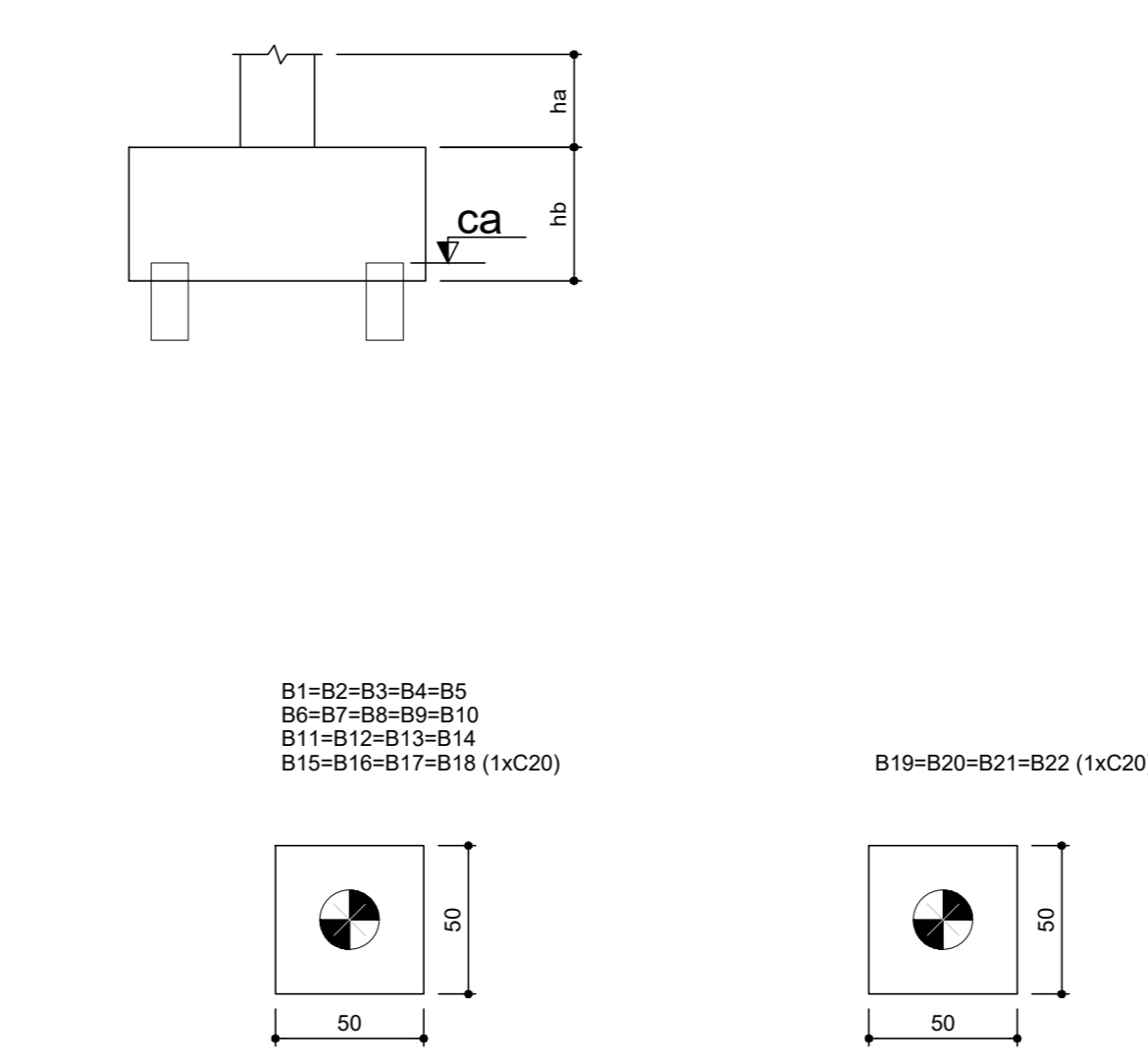
Volume de concreto (C-25) = 2.99 m³
 Área de forma = 61.20 m²



Planta de locação
 escala 1:50

Nome	Seção	X (cm)	Y (cm)	Carga Máx. (kN)	Carga Mín. (kN)	Lado B (cm)	Lado H (cm)	h0 (cm)	h1 (cm)	h2 (cm)	ne	Estaca	ca (cm)
P1	14x26	7.50	801.50	3.4	2.9	50	50	0	45	1	C20	-35	
P2	14x26	627.50	801.50	3.3	2.8	50	50	0	45	1	C20	-35	
P3	14x26	1362.50	801.50	3.4	2.8	50	50	0	45	1	C20	-35	
P4	14x26	1976.50	801.50	3.4	2.8	50	50	0	45	1	C20	-35	
P5	14x26	7.50	540.00	5.8	5.1	50	50	0	45	1	C20	-35	
P6	14x26	627.50	540.00	5.6	4.9	50	50	0	45	1	C20	-35	
P7	14x26	1362.50	540.00	5.7	5.0	50	50	0	45	1	C20	-35	
P8	14x26	1976.50	540.00	5.7	5.0	50	50	0	45	1	C20	-35	
P9	14x26	7.50	290.00	6.1	5.4	50	50	0	45	1	C20	-35	
P10	14x26	627.50	290.00	6.6	5.8	50	50	0	45	1	C20	-35	
P11	14x26	1362.50	290.00	6.7	5.9	50	50	0	45	1	C20	-35	
P12	14x26	1976.50	290.00	6.0	5.3	50	50	0	45	1	C20	-35	
P13	14x26	13.50	7.50	3.2	2.7	50	50	0	45	1	C20	-35	
P14	14x26	317.50	7.50	5.7	5.1	50	50	0	45	1	C20	-35	
P15	14x40	792.50	29.50	4.3	3.8	50	50	0	45	1	C20	-35	
P16	14x40	1207.50	29.50	4.4	3.9	50	50	0	45	1	C20	-35	
P17	14x26	1976.50	7.50	5.7	5.1	50	50	0	45	1	C20	-35	
P18	14x26	1976.50	7.50	3.1	2.6	50	50	0	45	1	C20	-35	
P19	14x26	1207.50	424.00	2.2	1.9	50	50	0	45	1	C20	-35	
P20	14x26	792.50	424.00	2.2	1.9	50	50	0	45	1	C20	-35	
P21	14x26	792.50	830.00	1.5	1.2	50	50	0	45	1	C20	-35	
P22	14x26	1207.50	830.00	1.5	1.2	50	50	0	45	1	C20	-35	

Simbologia	Nome	d (cm)	Quantidade
	C20	20.00	22



Legenda dos blocos
 escala 1:25

PREFEITURA LUZIÂNIA
 UM NOVO TEMPO COM RESPEITO E TRABALHO

SMDU
 SECRETARIA MUNICIPAL DE DESENVOLVIMENTO URBANO

OBRA: REFORMA DA 1ª ESCOLA POLO MUNICIPAL REALINO CAIXETA
 ENDEREÇO: DISTRITO RURAL DE MANIRATUBA, LUZIÂNIA-GO

PROPRIETÁRIO: PREFEITURA MUNICIPAL DE LUZIÂNIA

AUTOR DO PROJETO: TAYLS LOPES VIEIRA - CREA 28523/D-DF

RESPONSÁVEL TÉCNICO: TAYLS LOPES VIEIRA - CREA 28523/D-DF

FISCALIZAÇÃO E LICENÇA: [] CREA/CAU: []

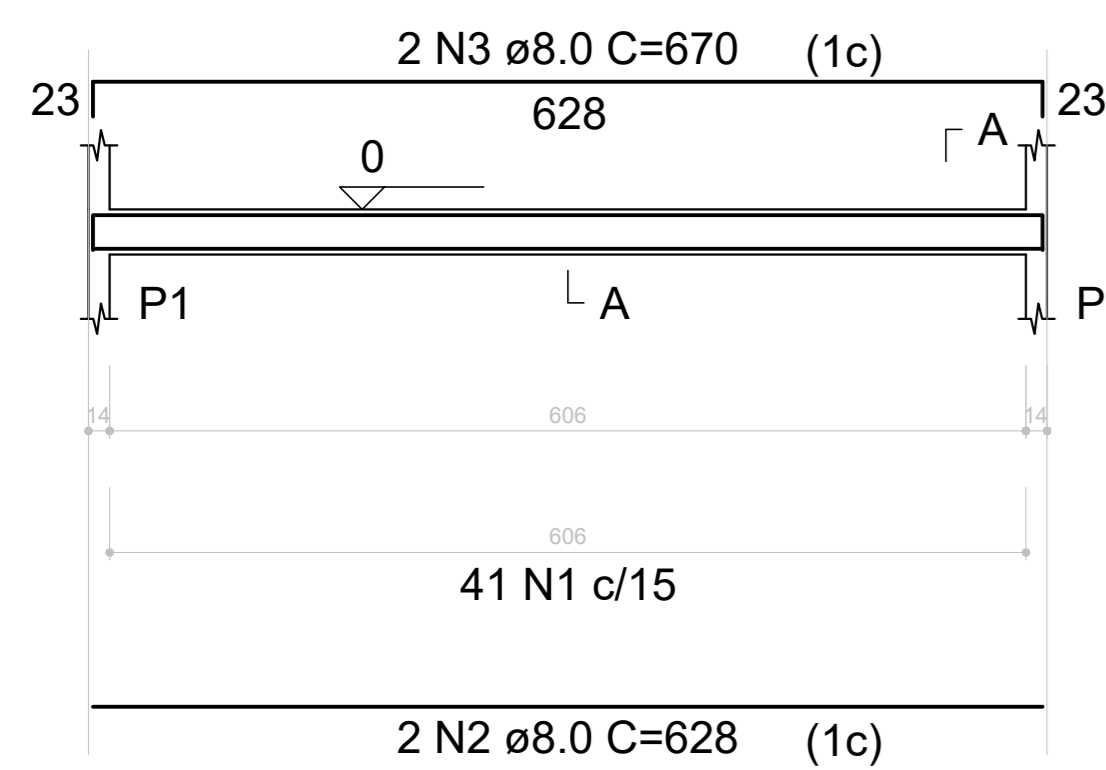
OUTROS: []

FOLHA: 2/4
 CONTEÚDO: PLANTAS, QUADROS E LEGENDAS
 ÁREAS: INDICADA EM QUADRO

DATA: 04/2023
 DESENHO: ISABELLE MORAES
 ESCALA: INDICADA
 UNIDADE: METROS

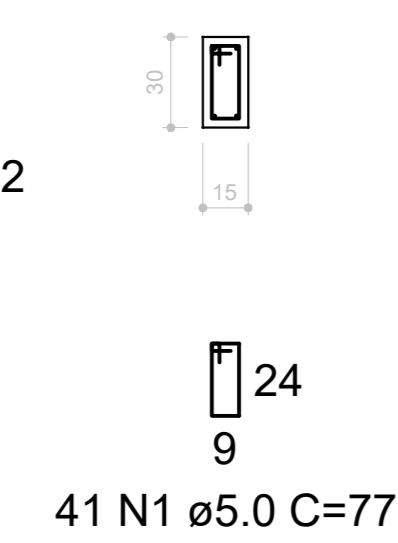
VB1 (15 x 30)

ESC 1:50



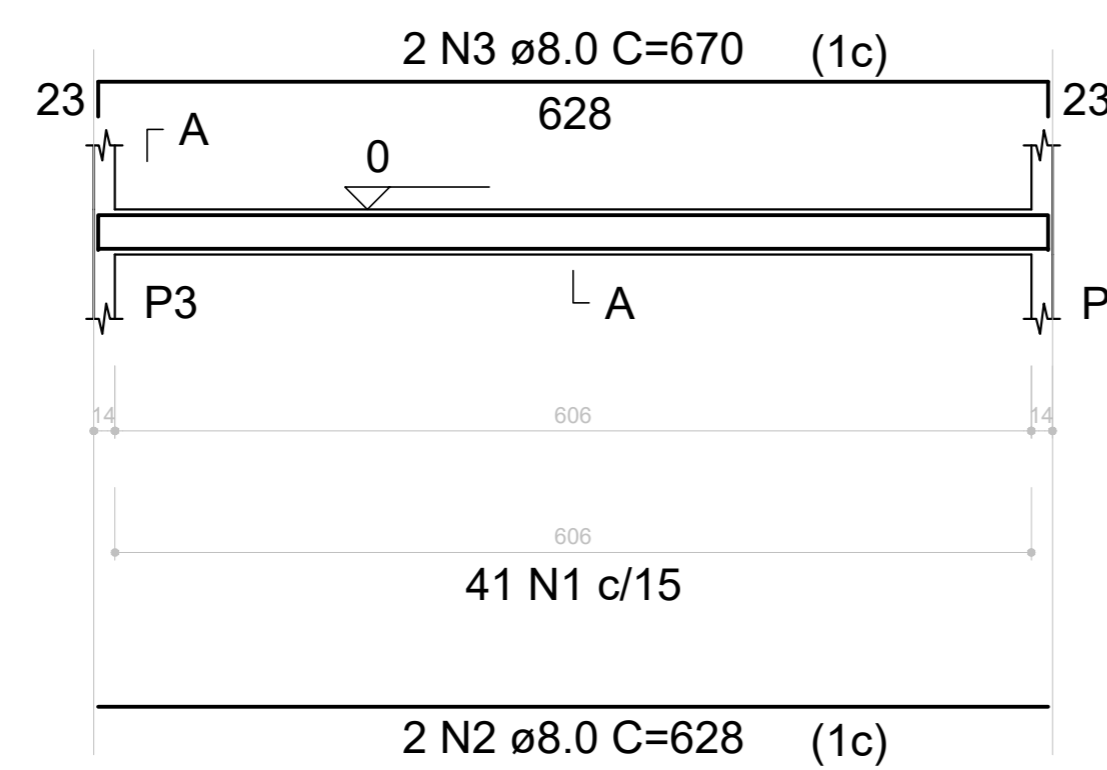
SEÇÃO A-A

ESC 1:25



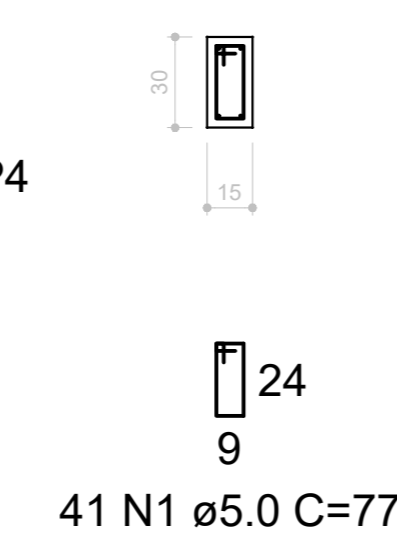
VB2 (15 x 30)

ESC 1:50



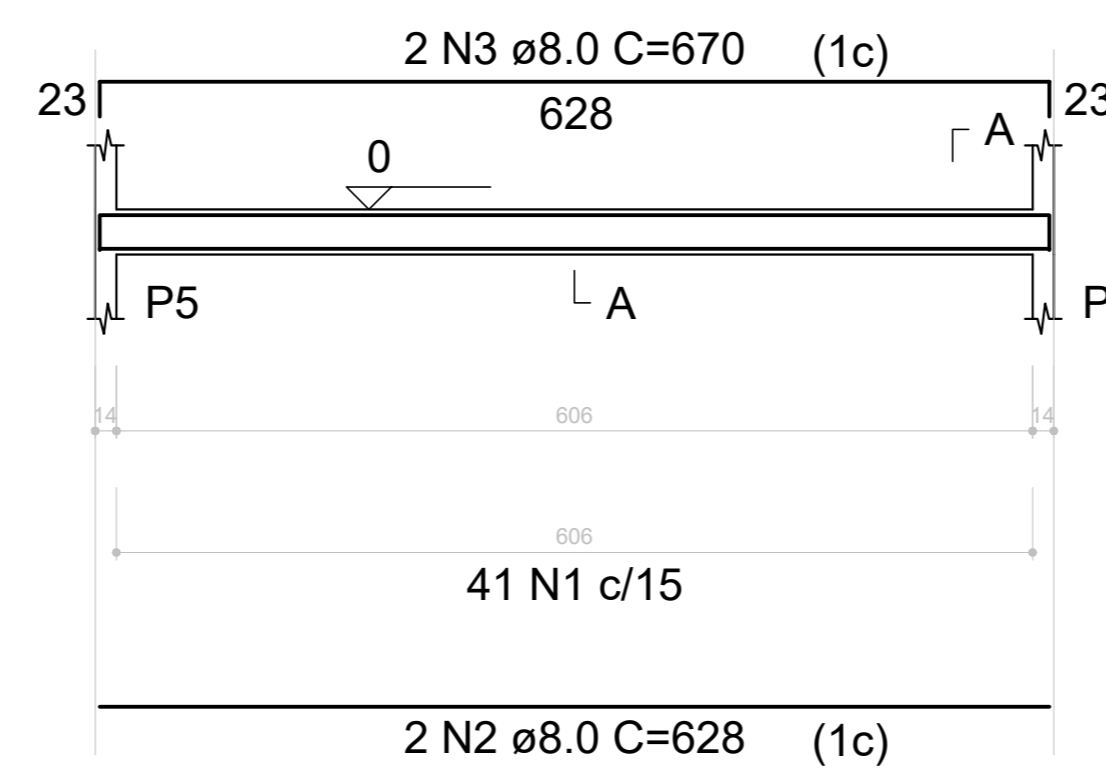
SEÇÃO A-A

ESC 1:25



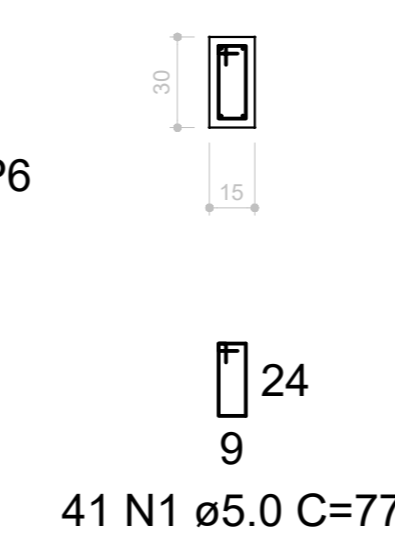
VB3 (15 x 30)

ESC 1:50



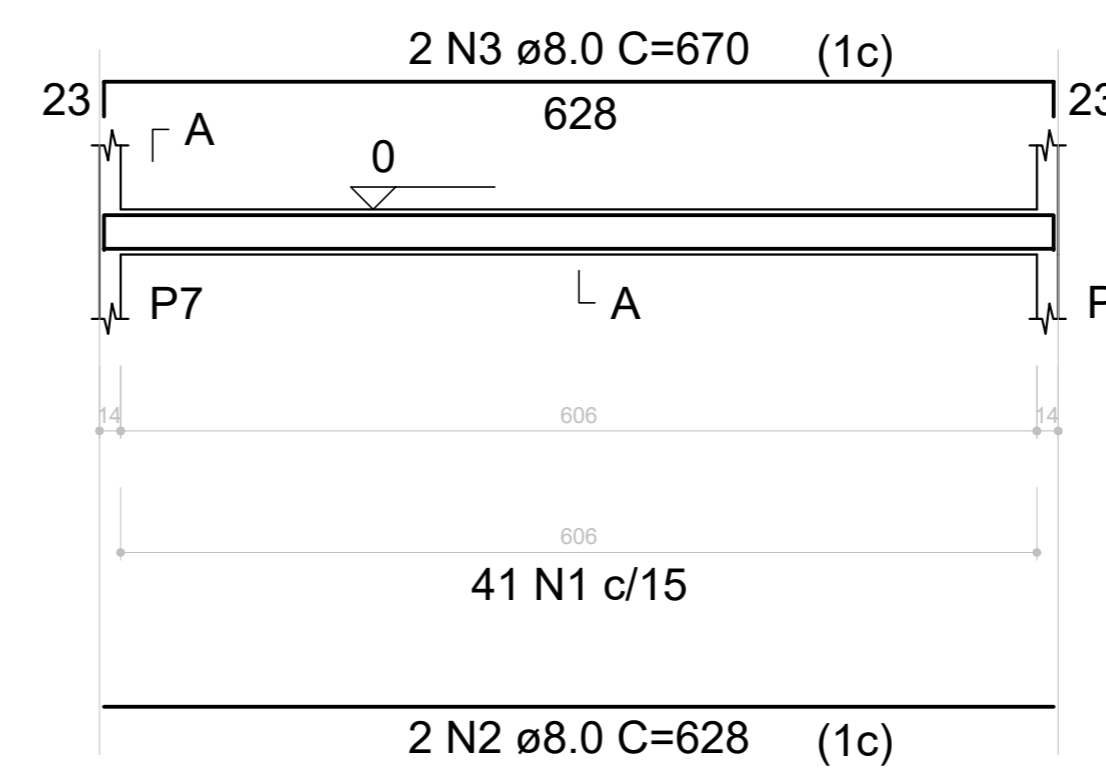
SEÇÃO A-A

ESC 1:25



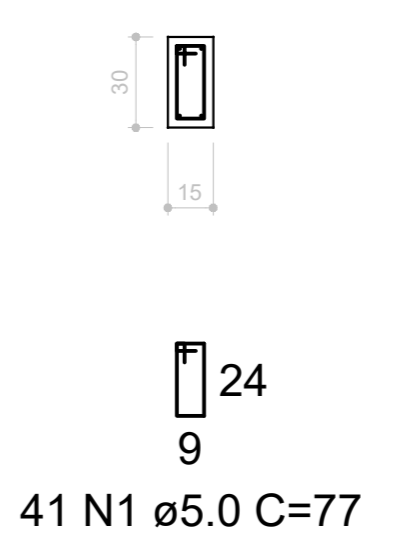
VB4 (15 x 30)

ESC 1:50



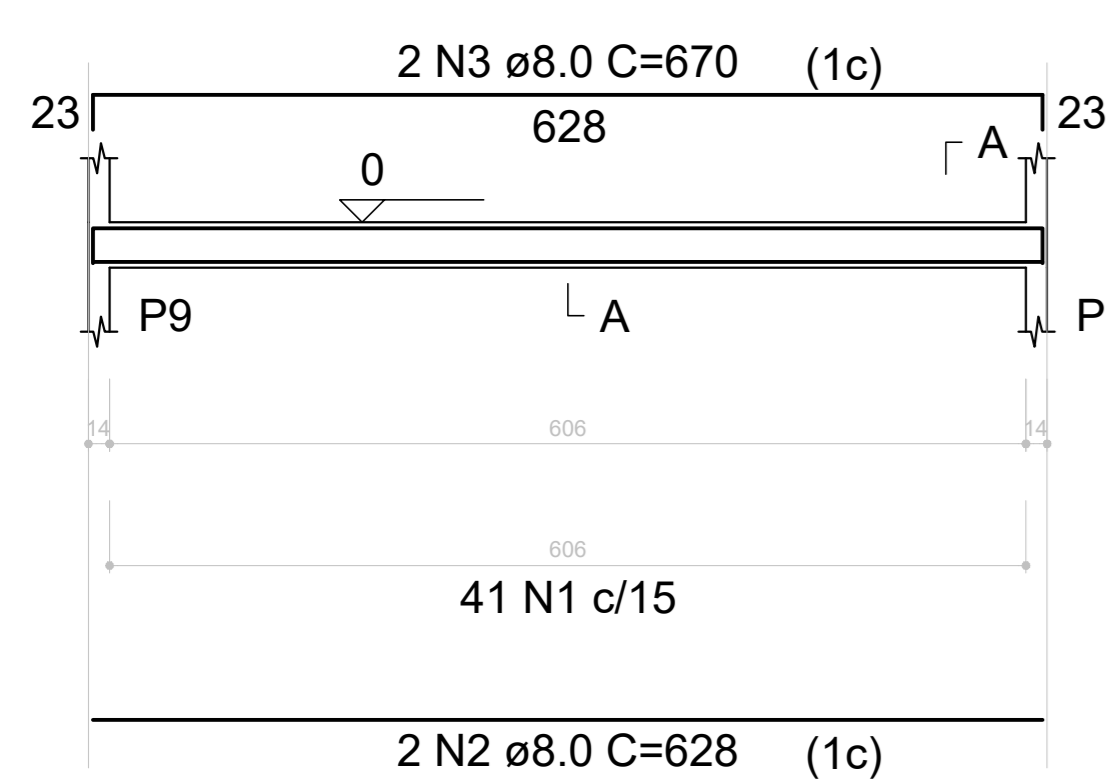
SEÇÃO A-A

ESC 1:25



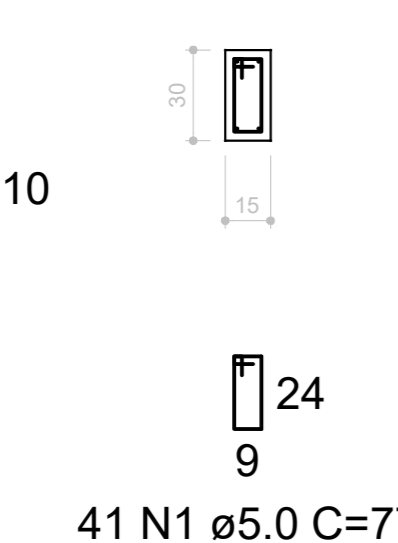
VB5 (15 x 30)

ESC 1:50



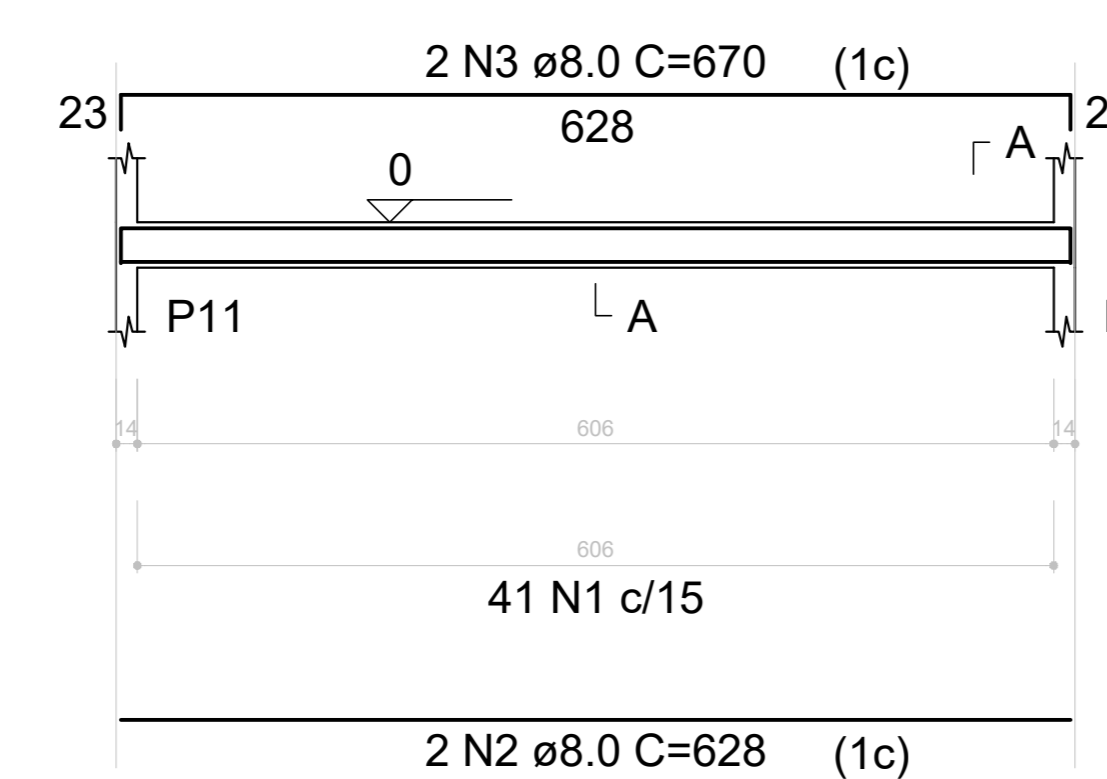
SEÇÃO A-A

ESC 1:25



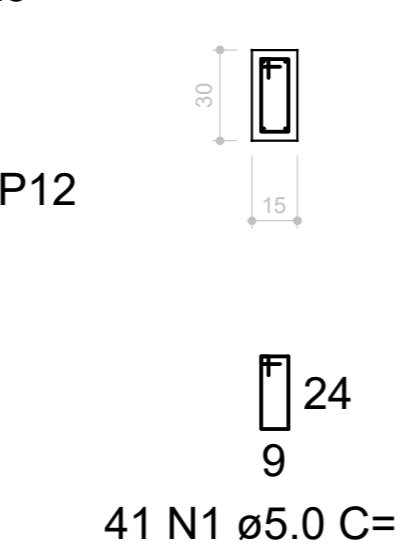
VB6 (15 x 30)

ESC 1:50



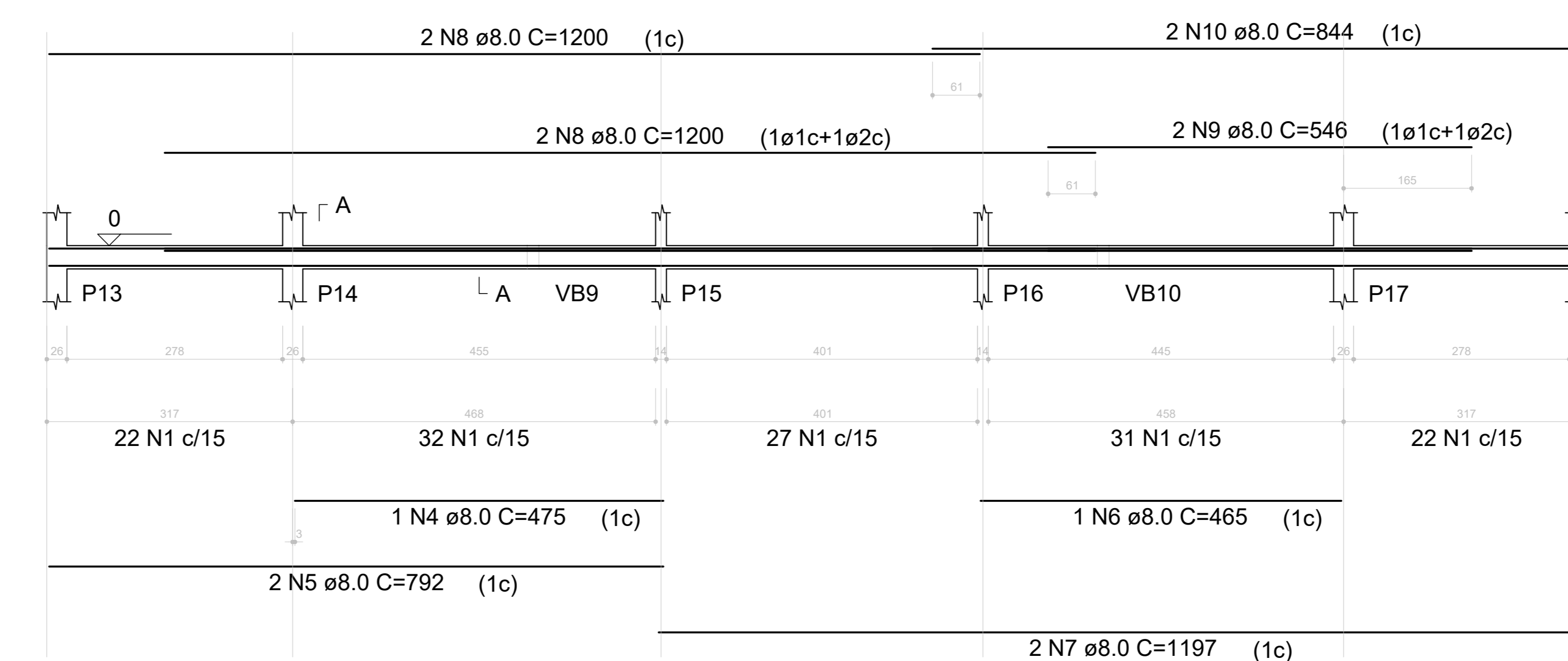
SEÇÃO A-A

ESC 1:25



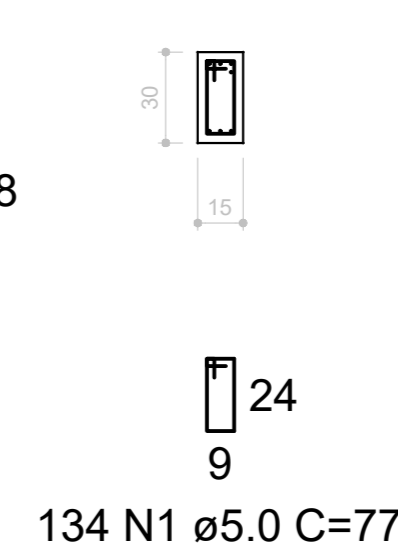
VB7 (15 x 30)

ESC 1:50



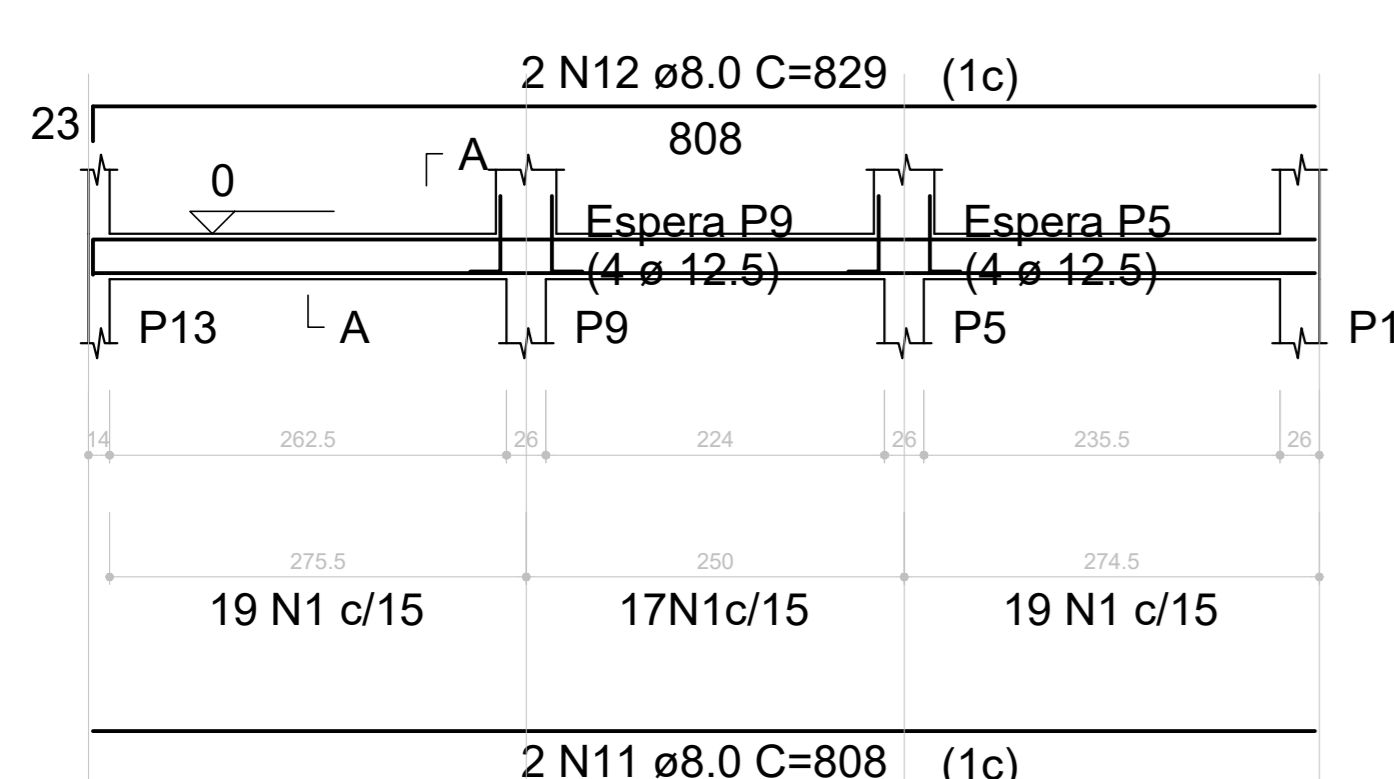
SEÇÃO A-A

ESC 1:25



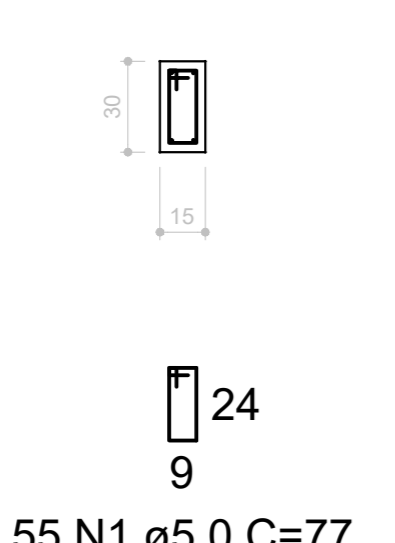
VB8 (15 x 30)

ESC 1:50



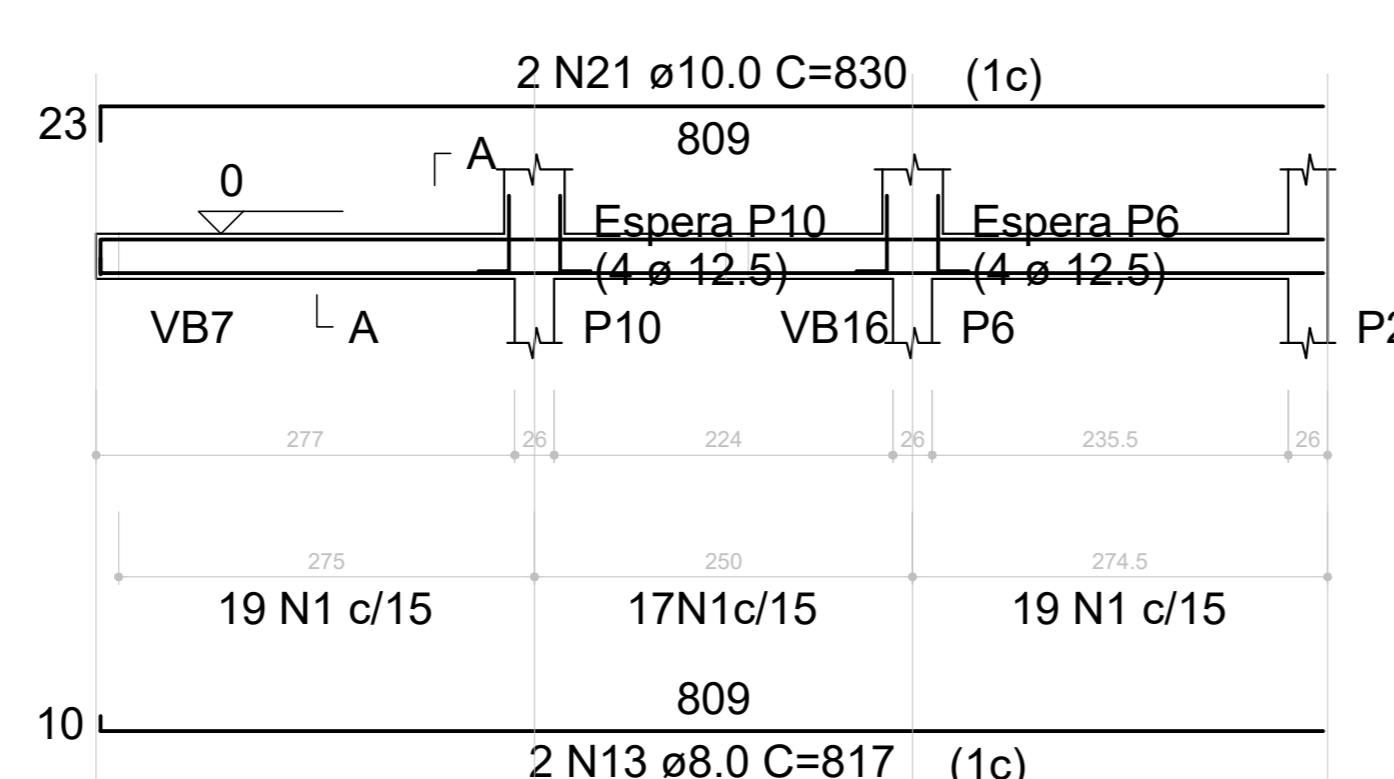
SEÇÃO A-A

ESC 1:25



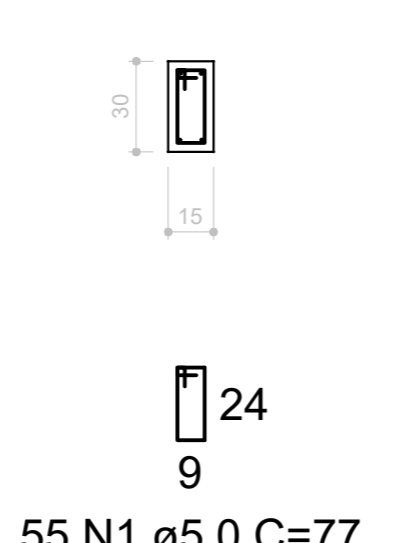
VB9 (15 x 30)

ESC 1:50



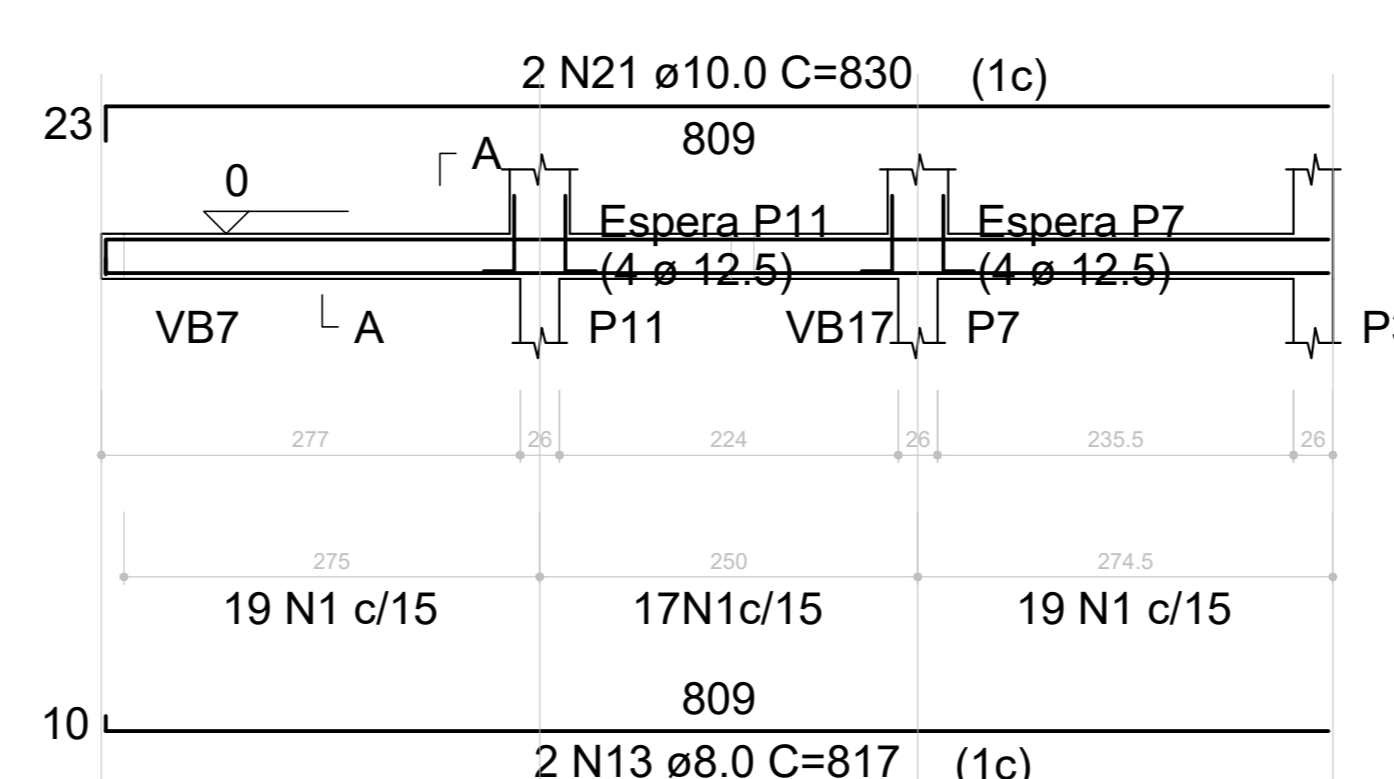
SEÇÃO A-A

ESC 1:25



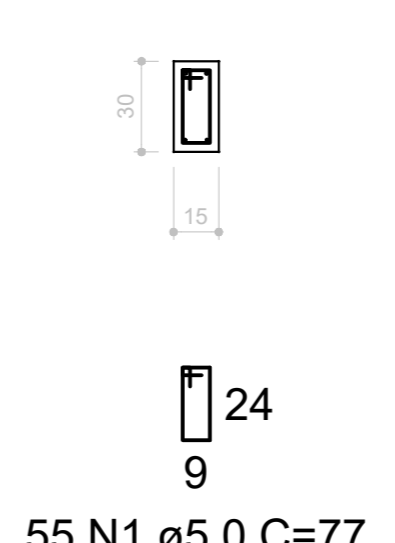
VB10 (15 x 30)

ESC 1:50



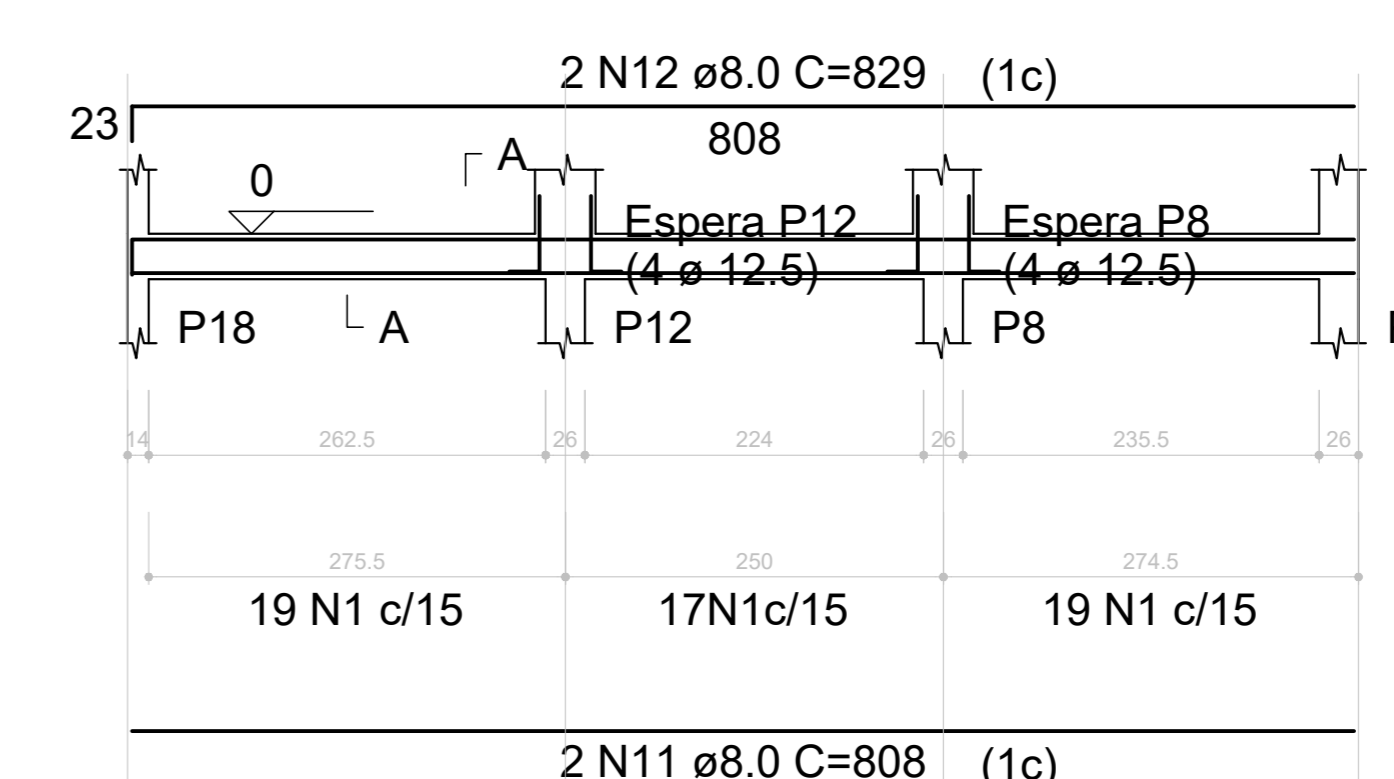
SEÇÃO A-A

ESC 1:25



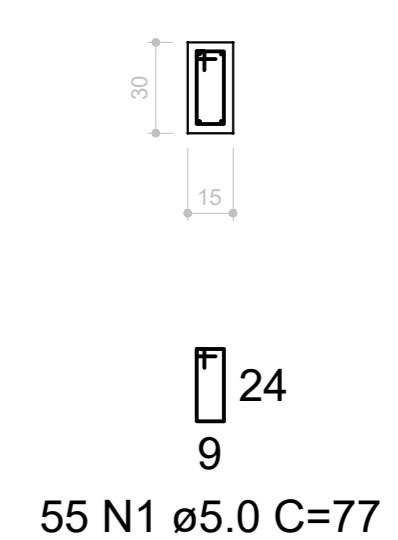
VB11 (15 x 30)

ESC 1:50



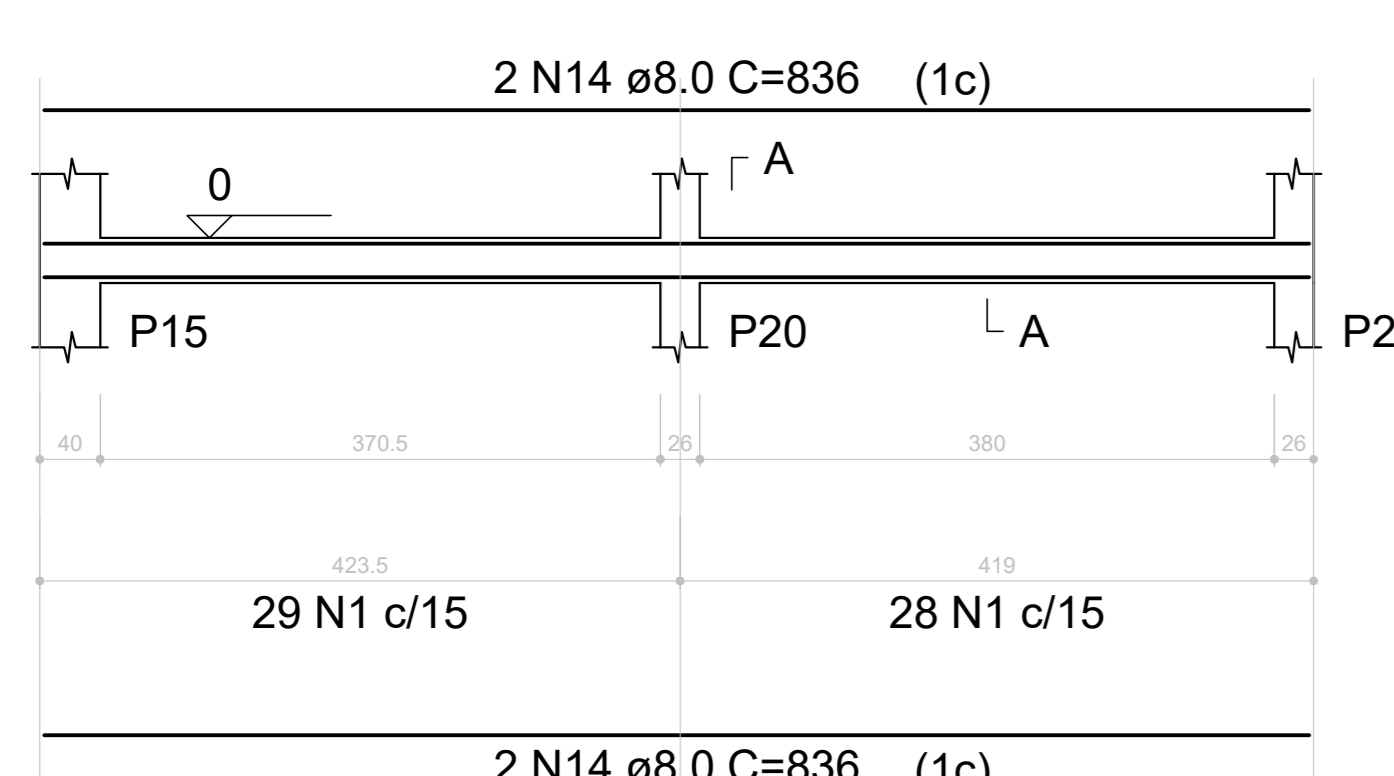
SEÇÃO A-A

ESC 1:25



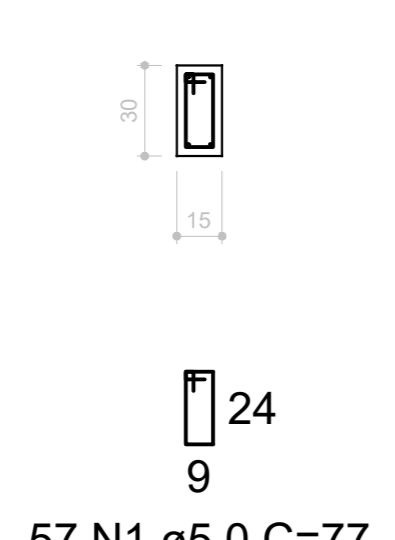
VB12 (15 x 30)

ESC 1:50



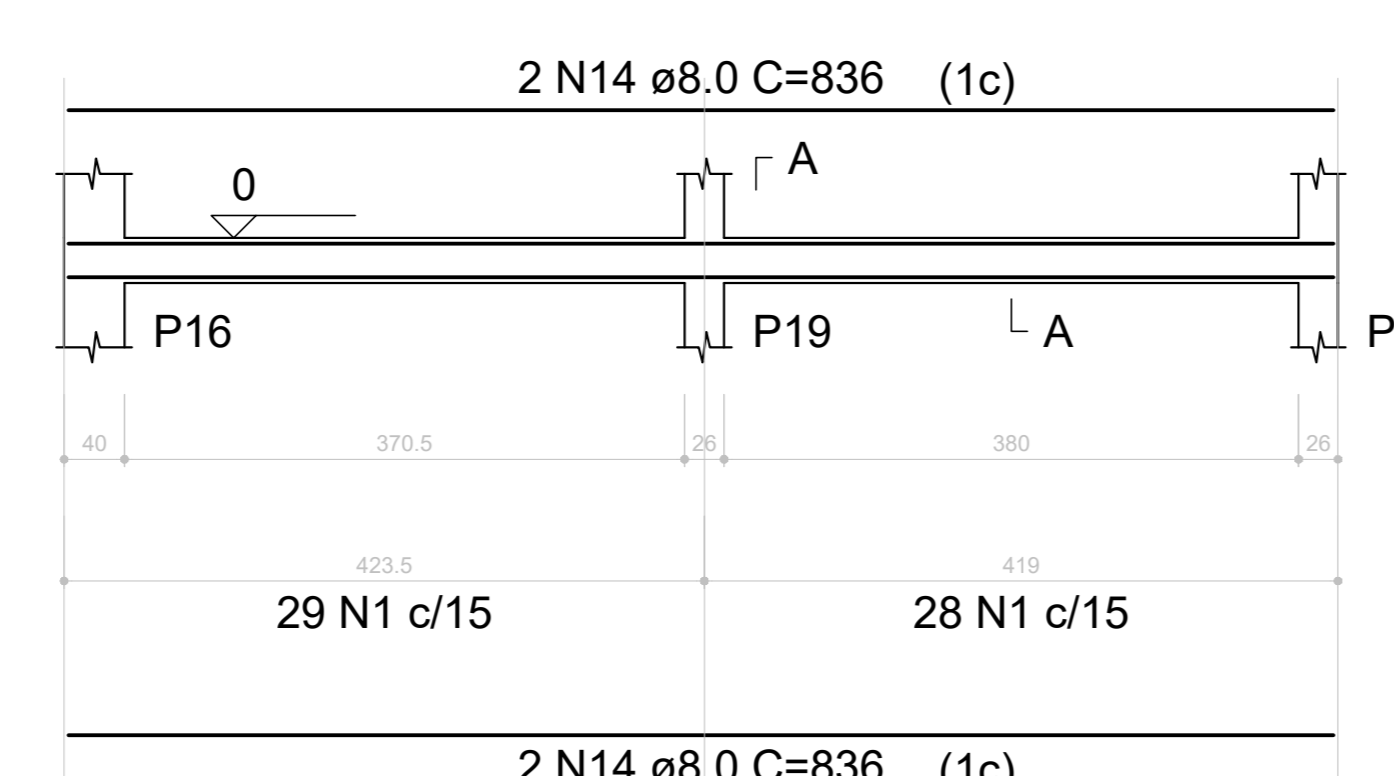
SEÇÃO A-A

ESC 1:25



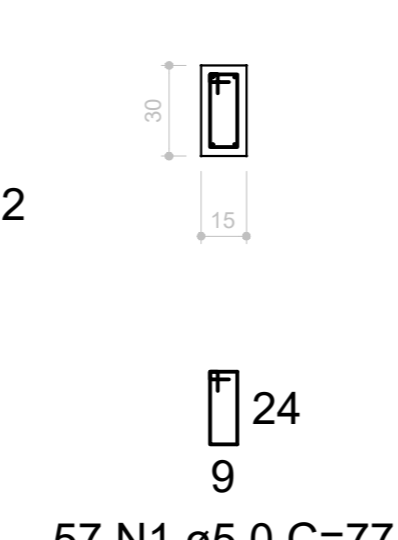
VB13 (15 x 30)

ESC 1:50



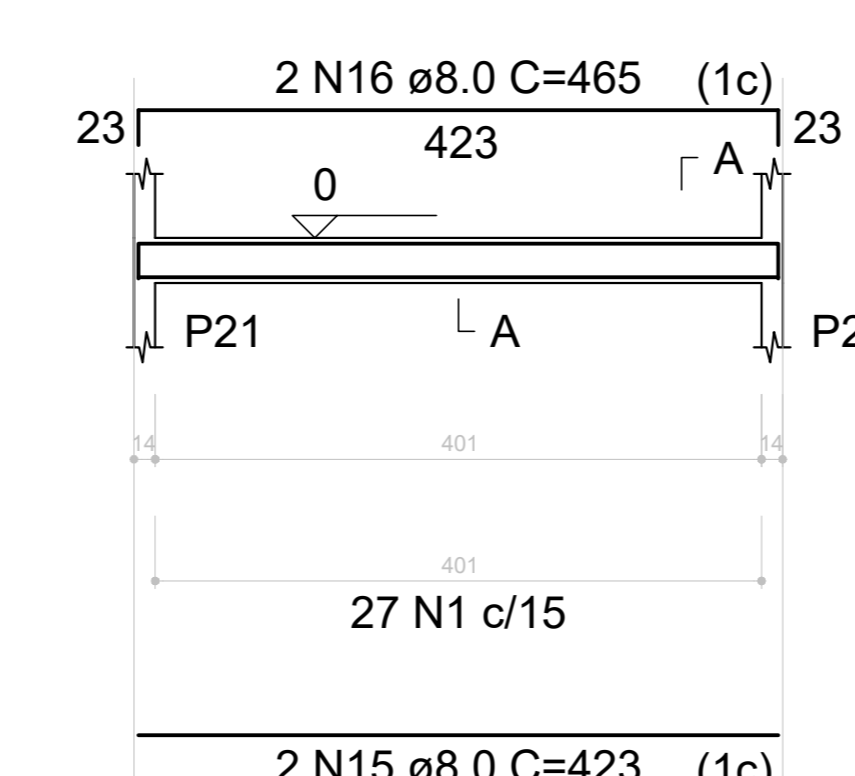
SEÇÃO A-A

ESC 1:25



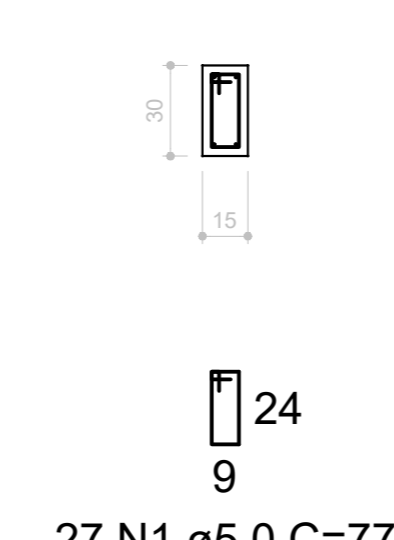
VB14 (15 x 30)

ESC 1:50



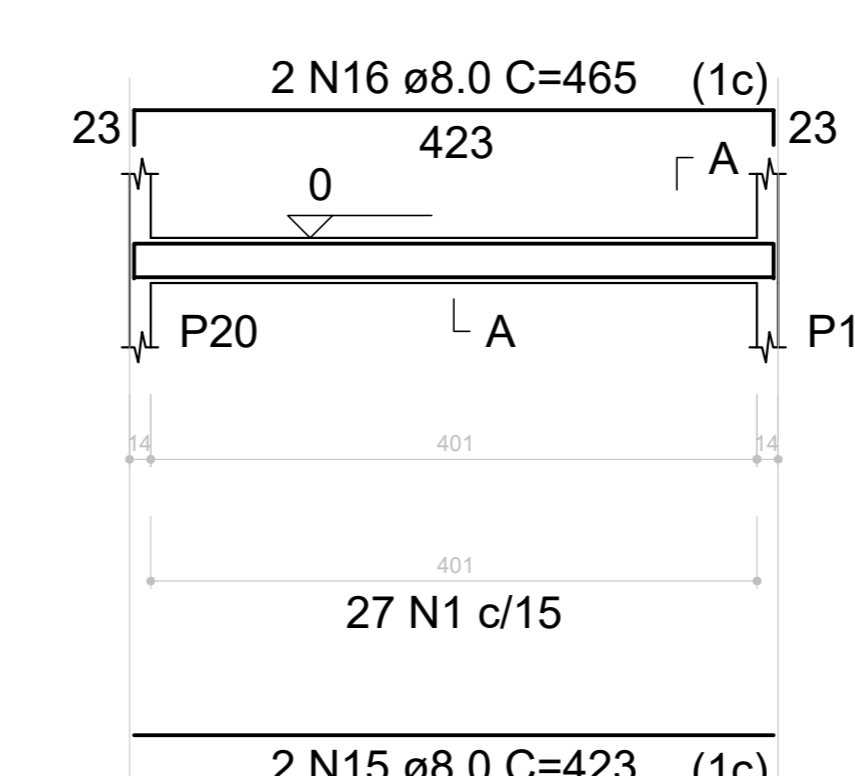
SEÇÃO A-A

ESC 1:25



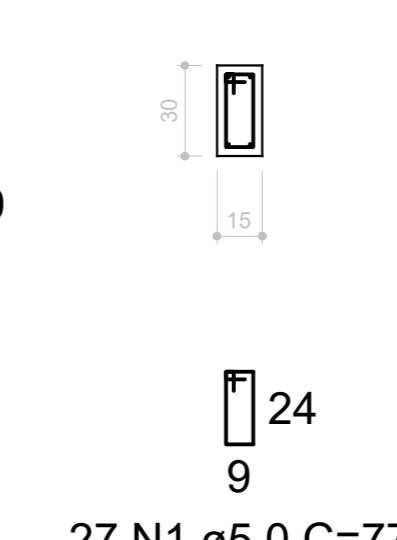
VB15 (15 x 30)

ESC 1:50



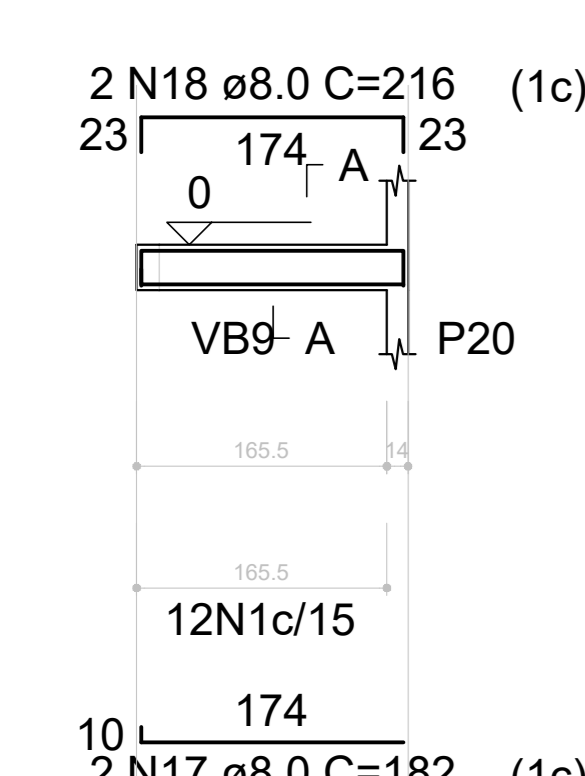
SEÇÃO A-A

ESC 1:25



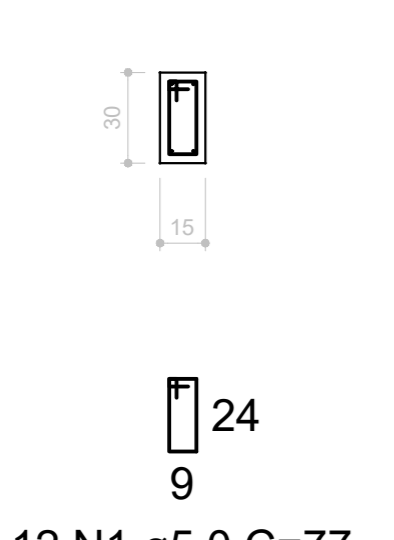
VB16 (15 x 30)

ESC 1:50



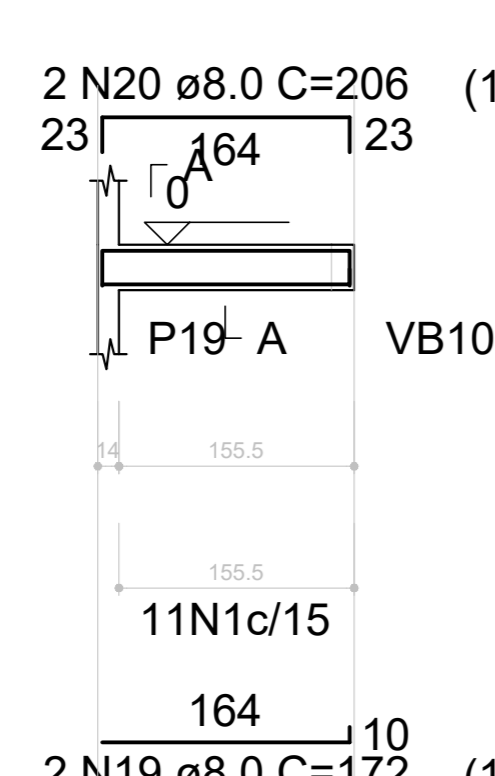
SEÇÃO A-A

ESC 1:25



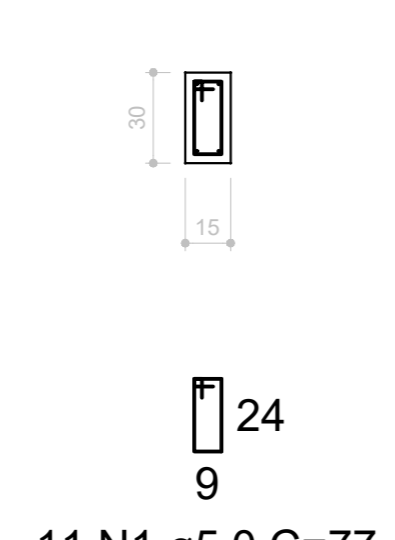
VB17 (15 x 30)

ESC 1:50



SEÇÃO A-A

ESC 1:25



RELAÇÃO DO AÇO

AÇO	N	DIAM (mm)	QUANT	C.UNIT (cm)	C.TOTAL (cm)
CA60	1	5.0	791	77	60907
CA50	2	8.0	12	628	7536
	3	8.0	12	670	8040
	4	8.0	1	475	475
	5	8.0	2	792	1584
	6	8.0	1	465	465
	7	8.0	2	1197	2394
	8	8.0	4	1200	4800
	9	8.0	2	546	1092
	10	8.0	2	844	1688
	11	8.0	4	808	3232
	12	8.0	4	829	3316
	13	8.0	4	817	3268
	14	8.0	8	836	6688
	15	8.0	4	423	1692
	16	8.0	4	465	1860
	17	8.0	2	182	364
	18	8.0	2	216	432
	19	8.0	2	172	344
	20	8.0	2	206	412
	21	10.0	4	830	3320

RESUMO DO AÇO

AÇO	DIAM (mm)	C.TOTAL (m)	PESO + 10% (kg)
CA50	8.0	496.8	215.6
CA60	10.0	33.2	22.5
CA60	5.0	609.1	103.3

PESO TOTAL (kg)	
CA50	238.2
CA60	103.3

Volume de concreto (C-25) = 5.37 m³
Área de forma = 89.57 m²

ESTRUTURAL

OBRA: REFORMA DA 1ª ESCOLA POLO MUNICIPAL REALINO CAIXETA
ENDEREÇO: DISTRITO RURAL DE MANRATUBA, LUZIÂNIA-GO

PROPRIETÁRIO: PREFEITURA MUNICIPAL DE LUZIÂNIA

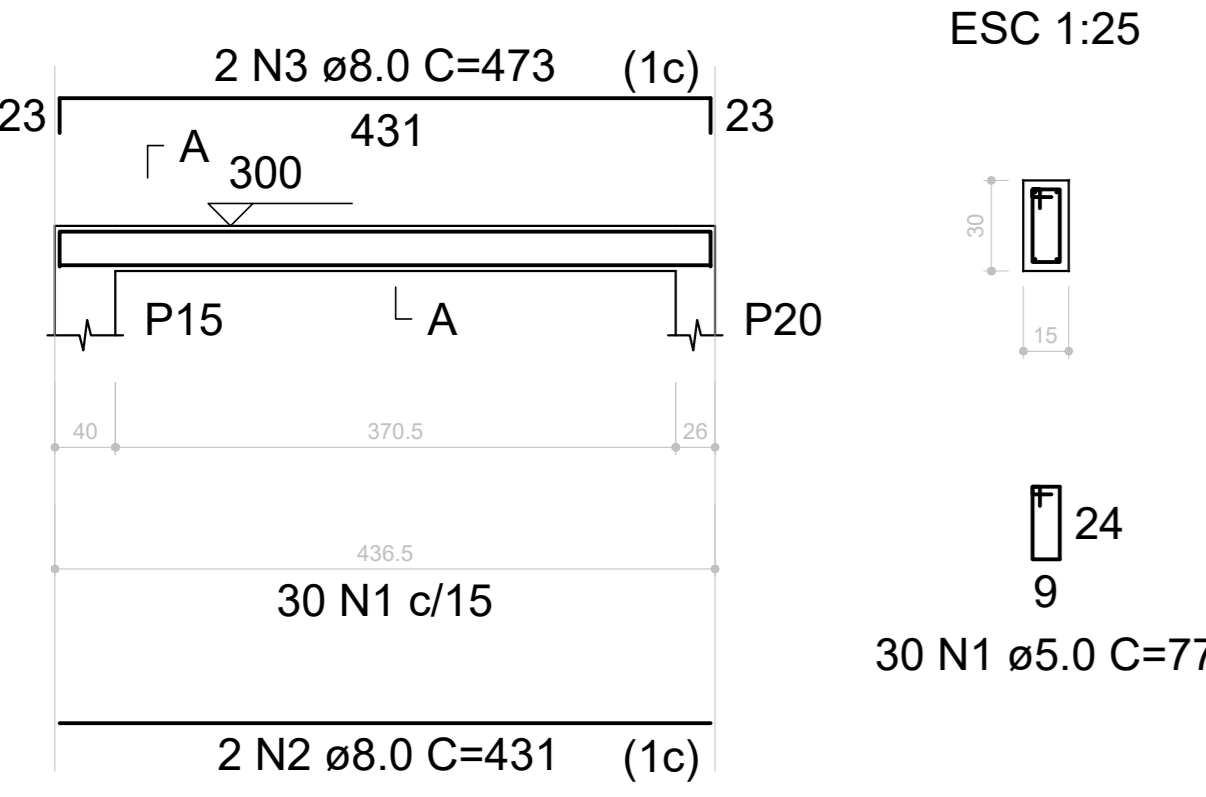
AUTOR DO PROJETO: TAYS LOPES VIEIRA - CREA 28523/D-DF

RESPONSÁVEL TÉCNICO: TAYS LOPES VIEIRA - CREA 28523/D-DF

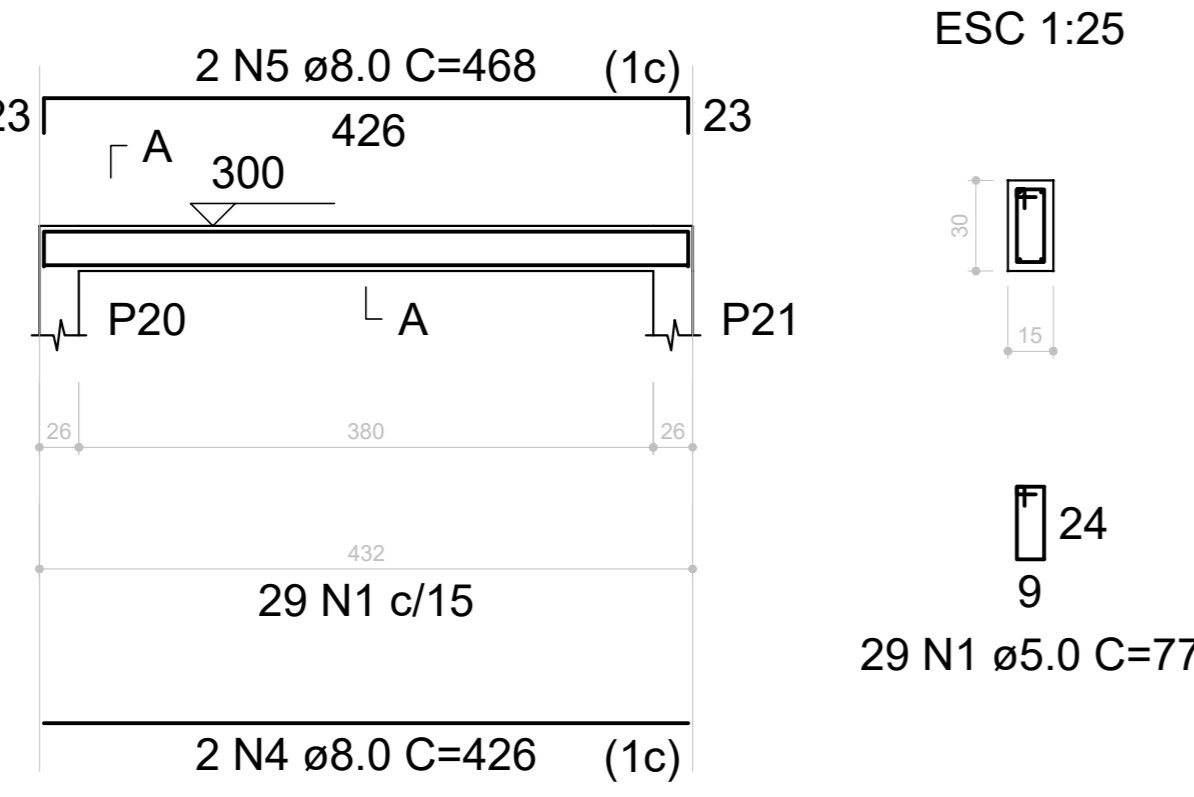
DIREITOS AUTORAIS DESTA OBRA PERTENCEM AOS PROFISSIONAIS ACIMA CITADOS. É PROIBIDA A SUA REPRODUÇÃO, MODIFICAÇÃO E/OU ALTERAÇÃO CONFORME LEI 5.988 ART. 25.

FISCALIZAÇÃO E LICENÇA:	CREA/CAU:
OUTROS:	

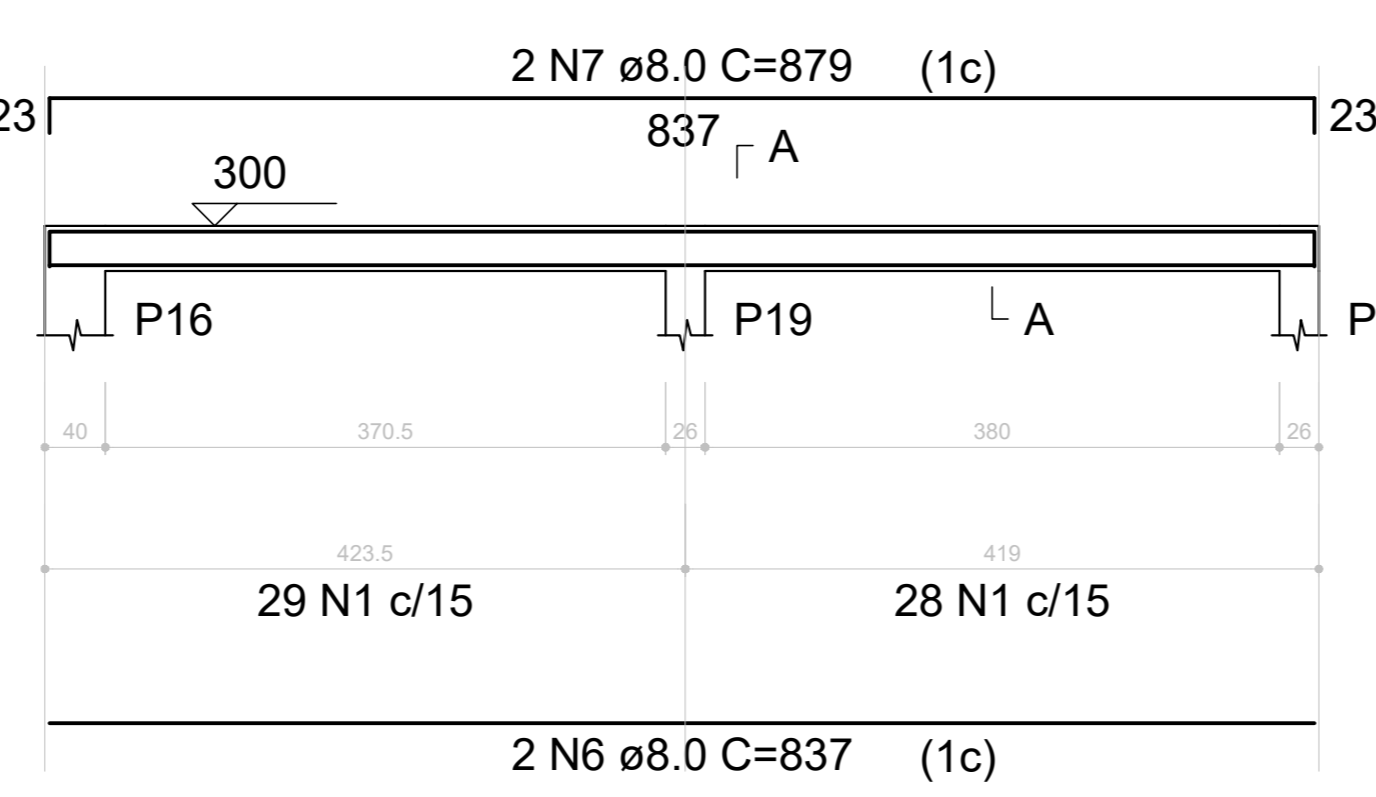
V112 (15 x 30)
ESC 1:50



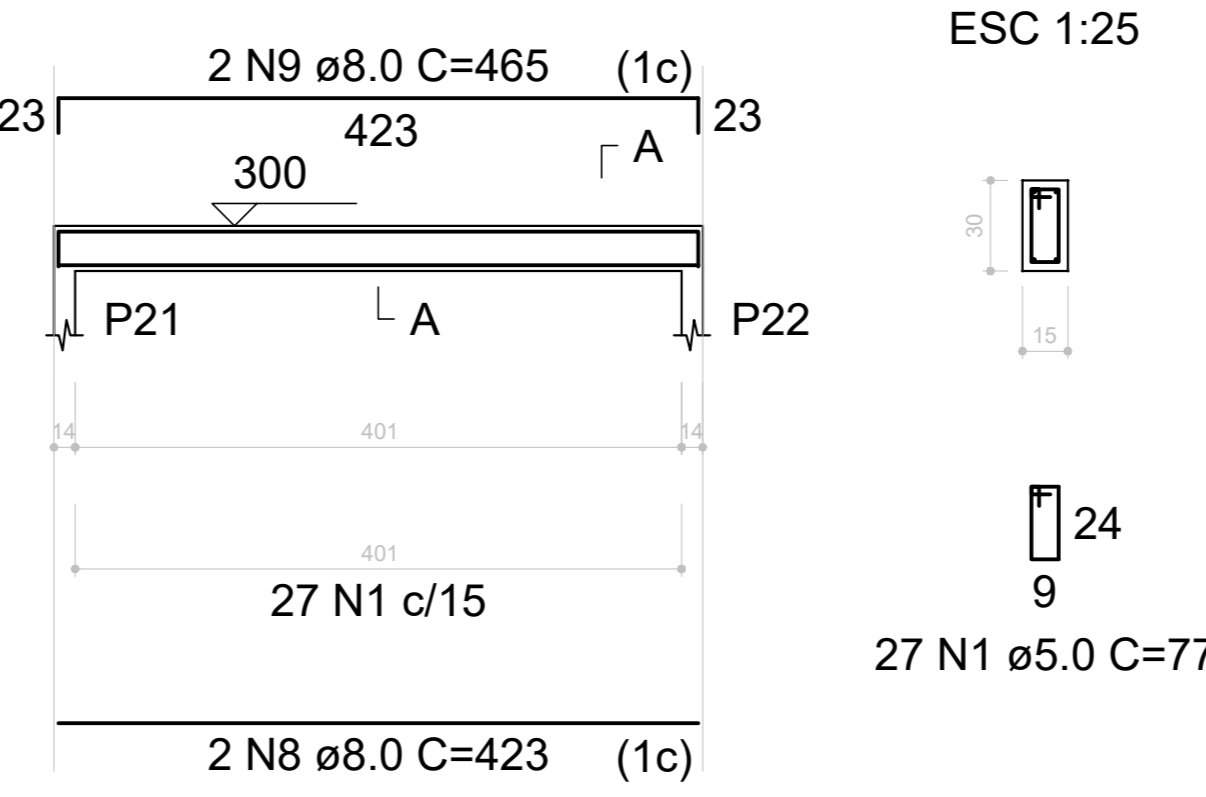
V113 (15 x 30)
ESC 1:50



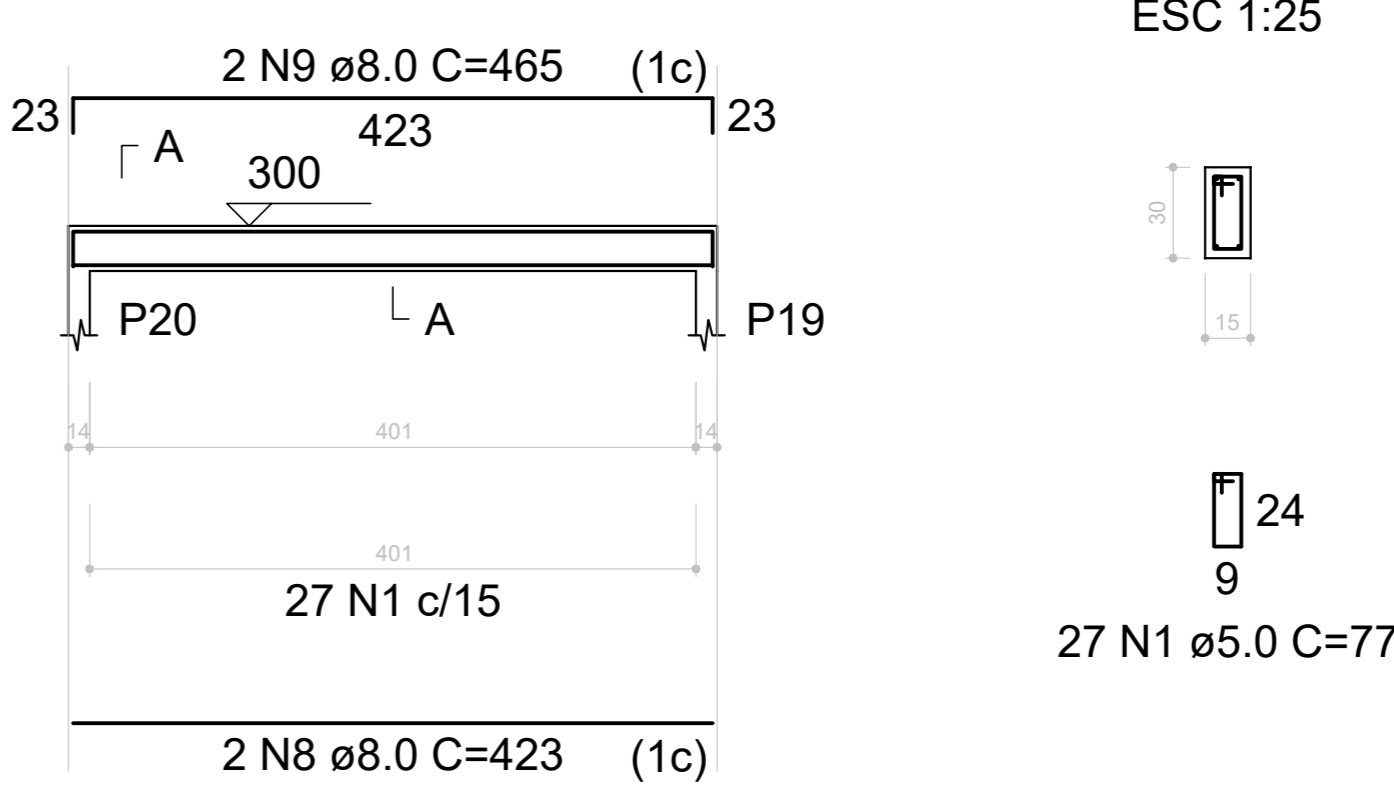
V114 (15 x 30)
ESC 1:50



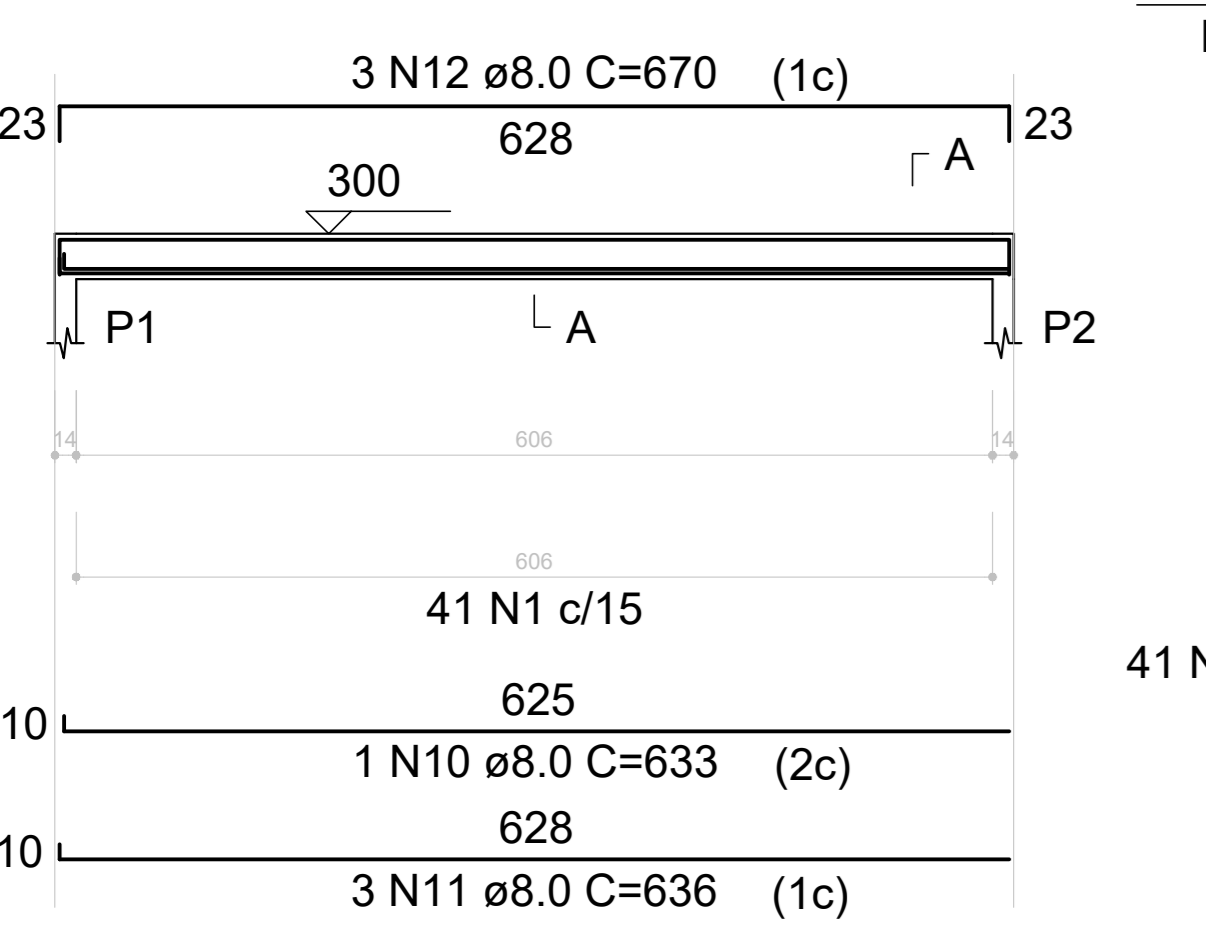
V115 (15 x 30)
ESC 1:50



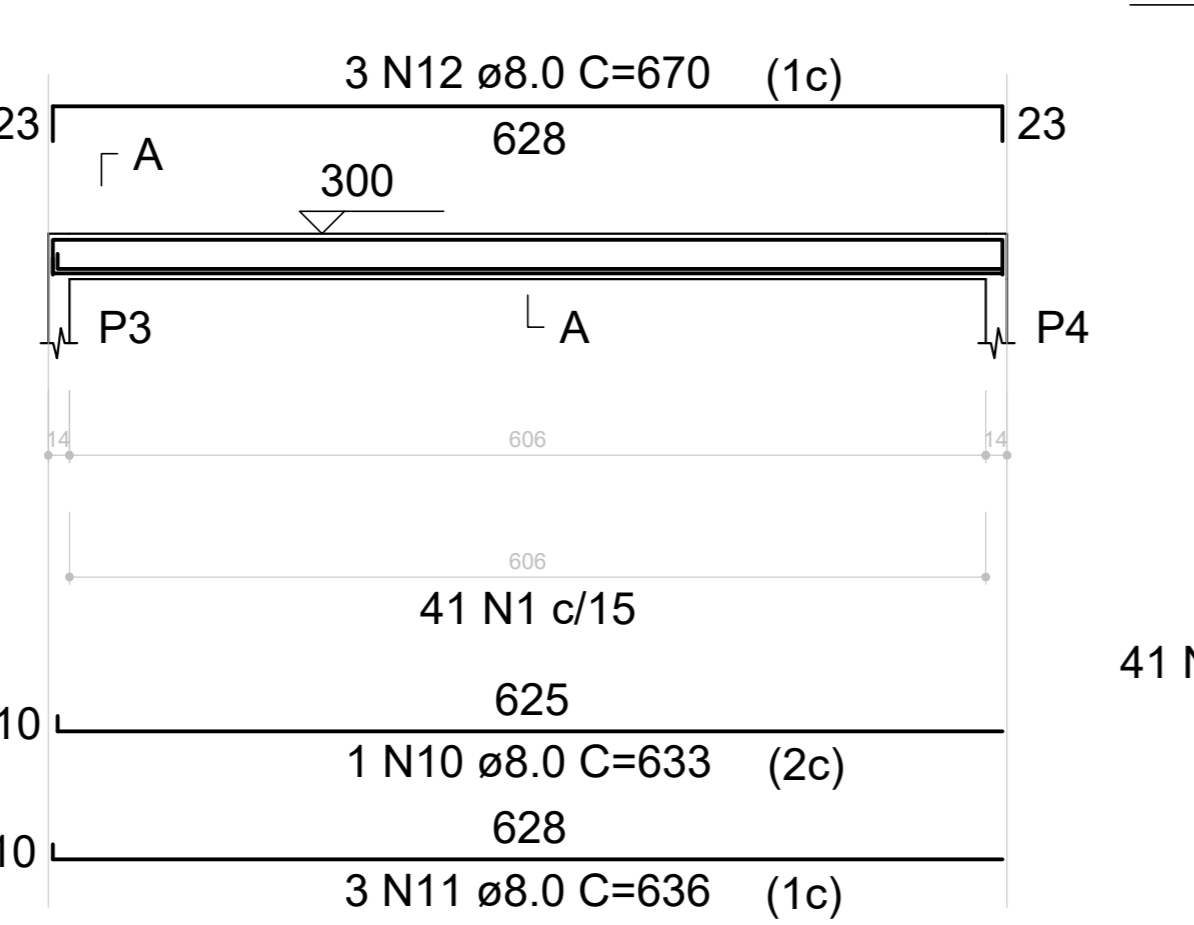
V116 (15 x 30)
ESC 1:50



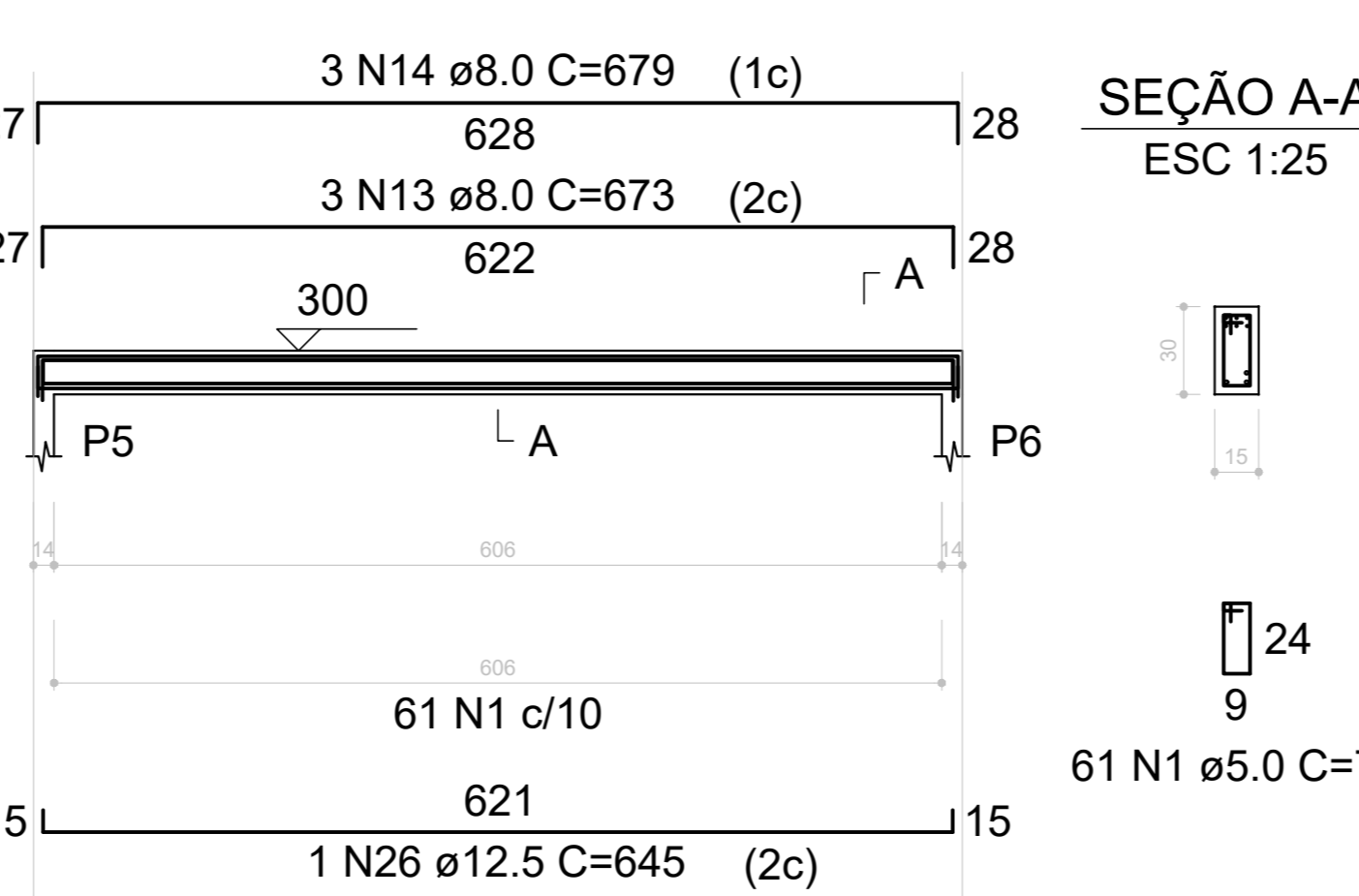
VT101 (15 x 30)
ESC 1:50



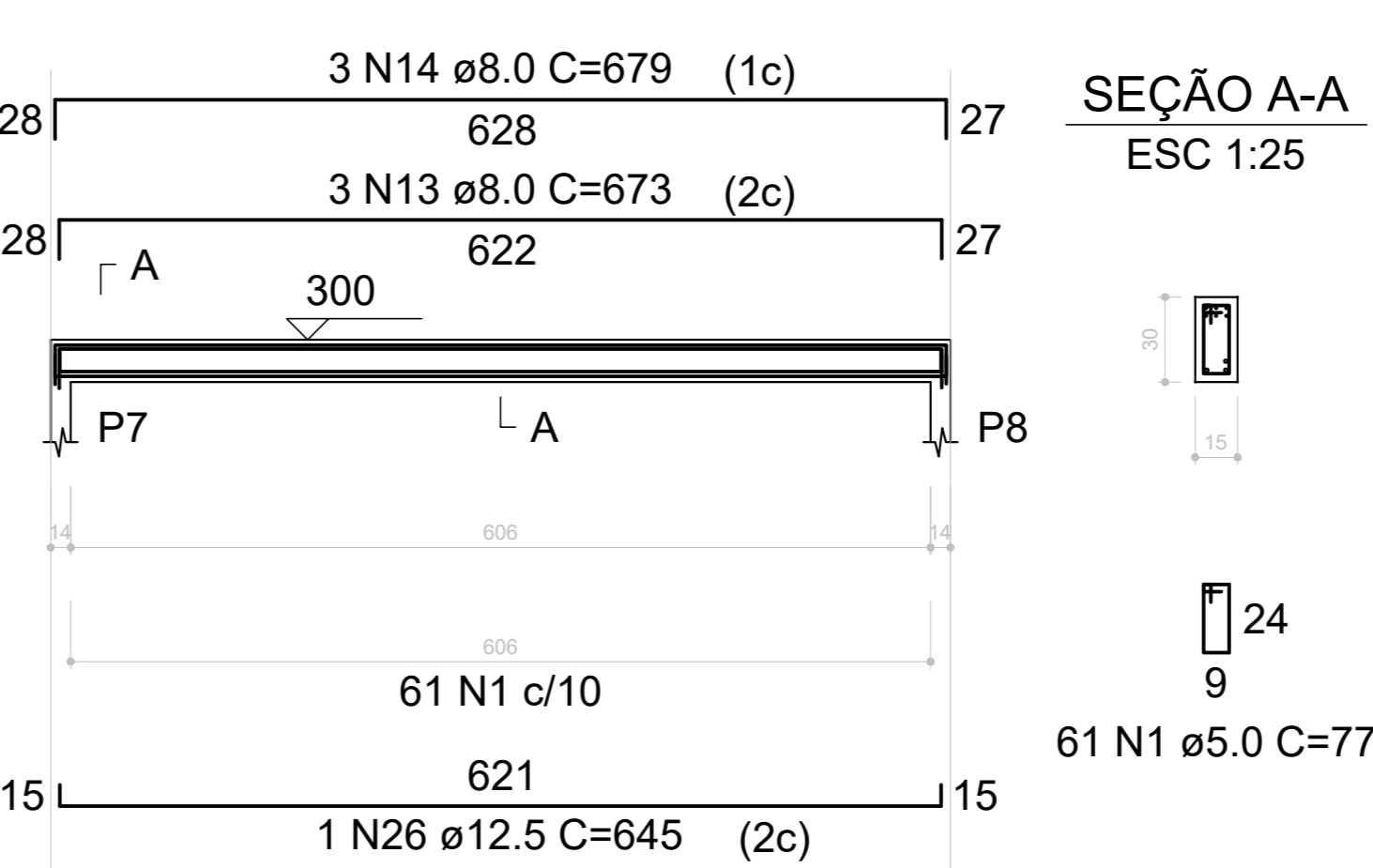
VT102 (15 x 30)
ESC 1:50



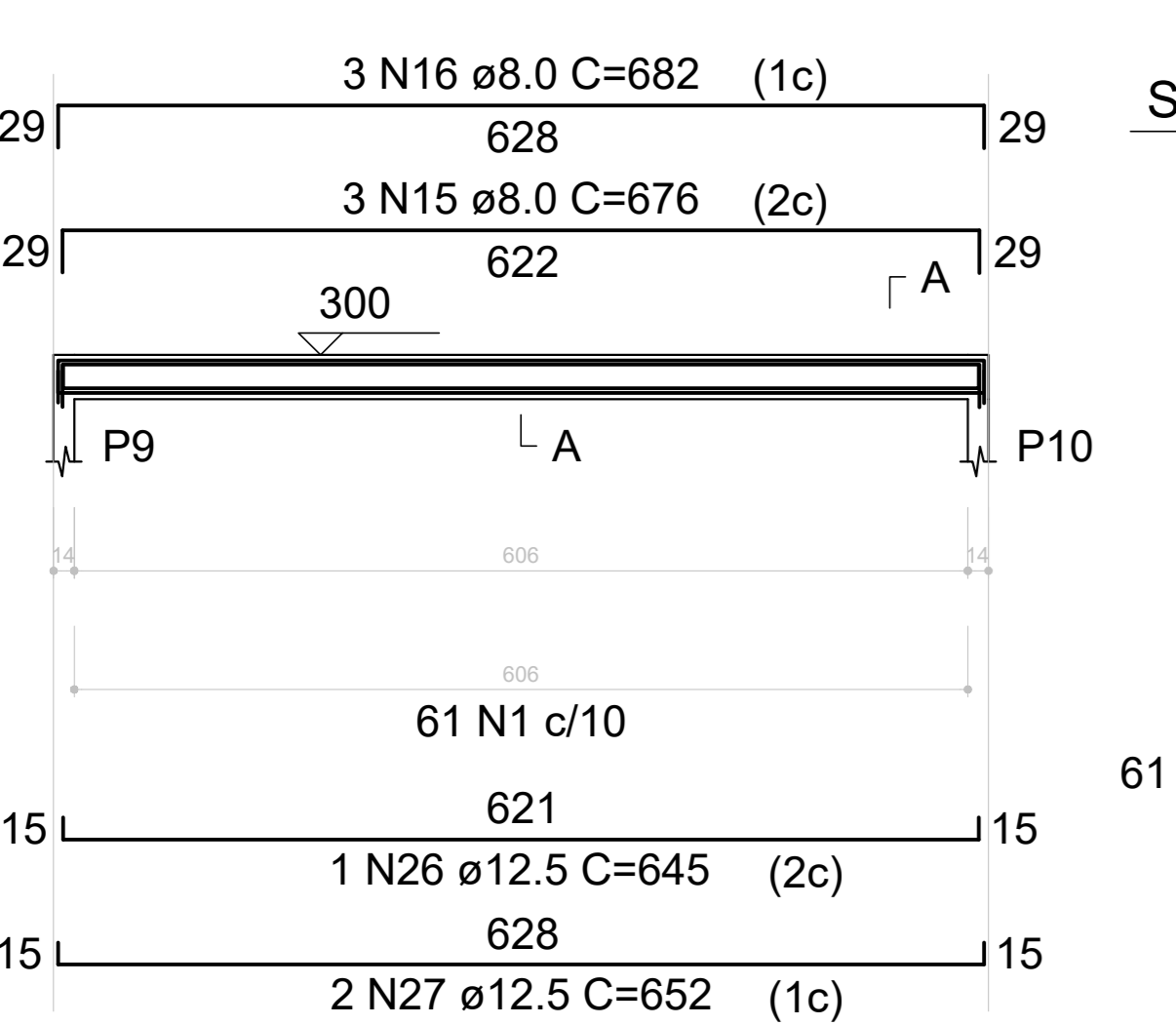
VT103 (15 x 30)
ESC 1:50



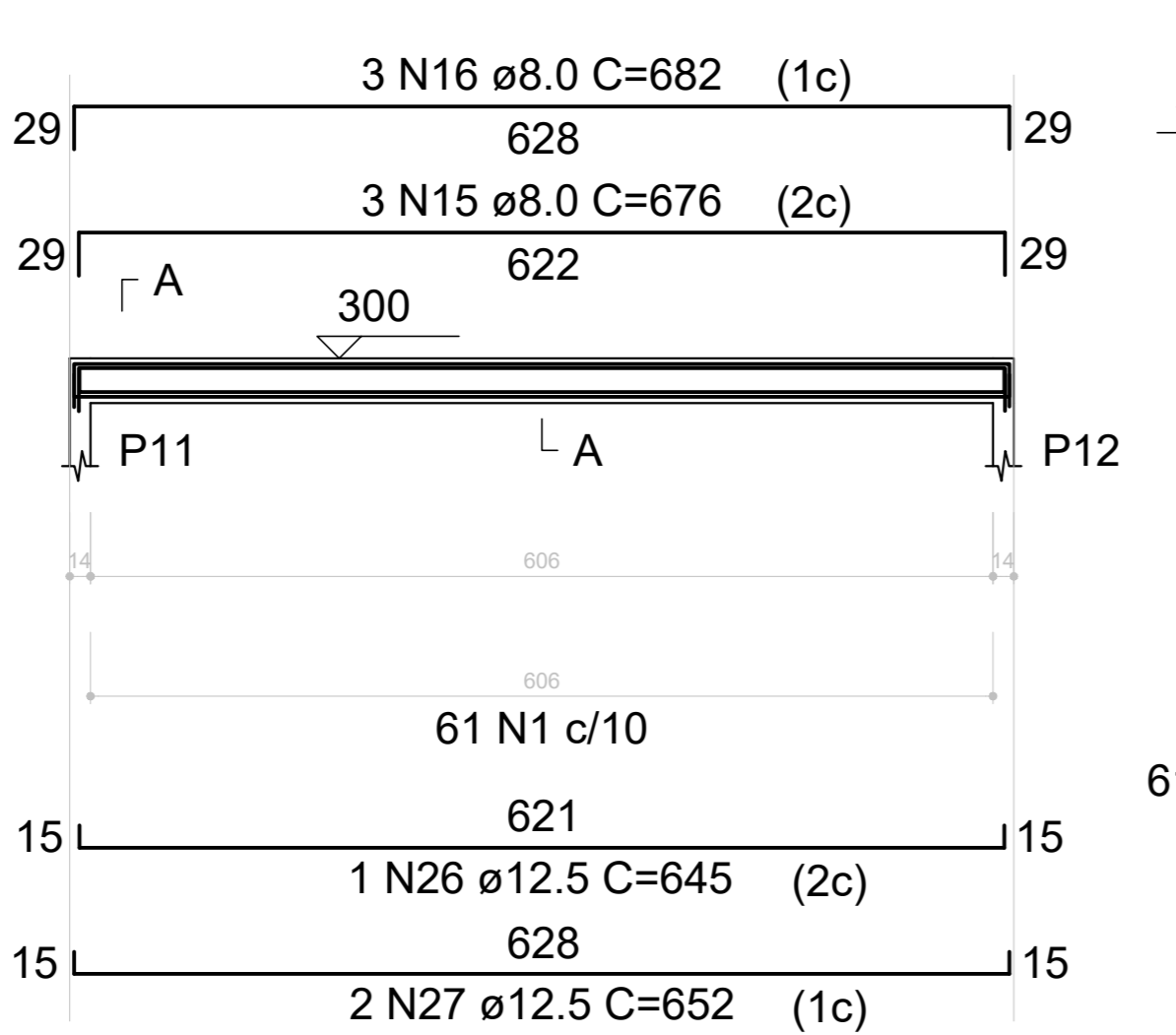
VT104 (15 x 30)
ESC 1:50



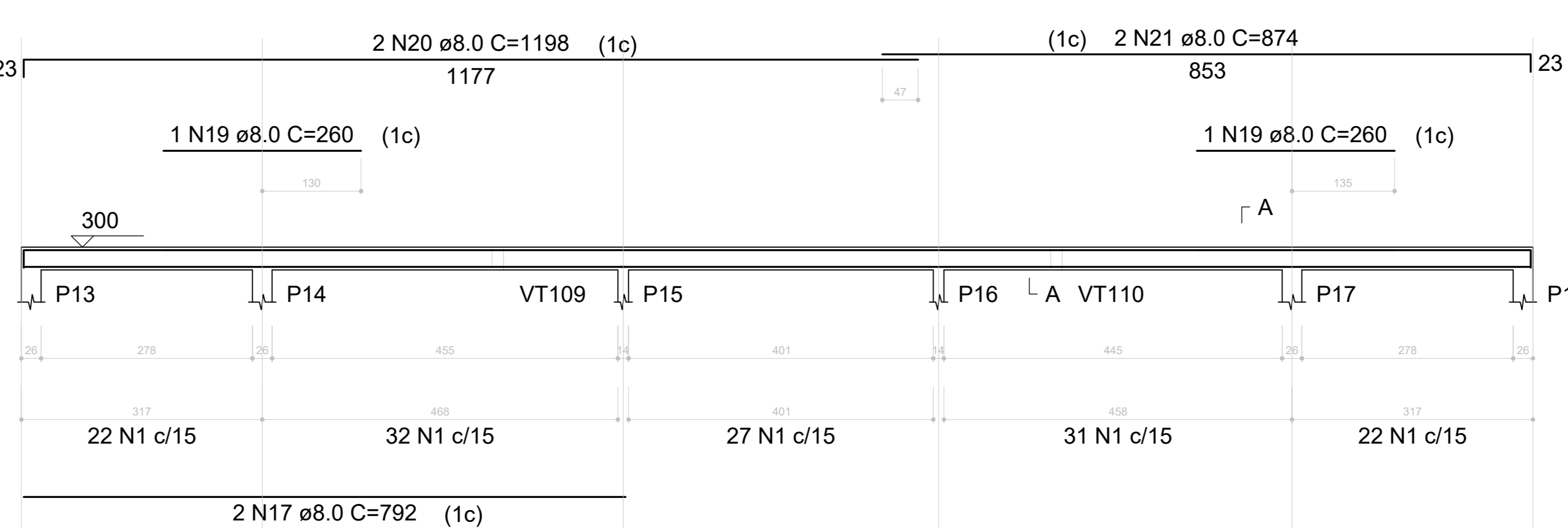
VT105 (15 x 30)
ESC 1:50



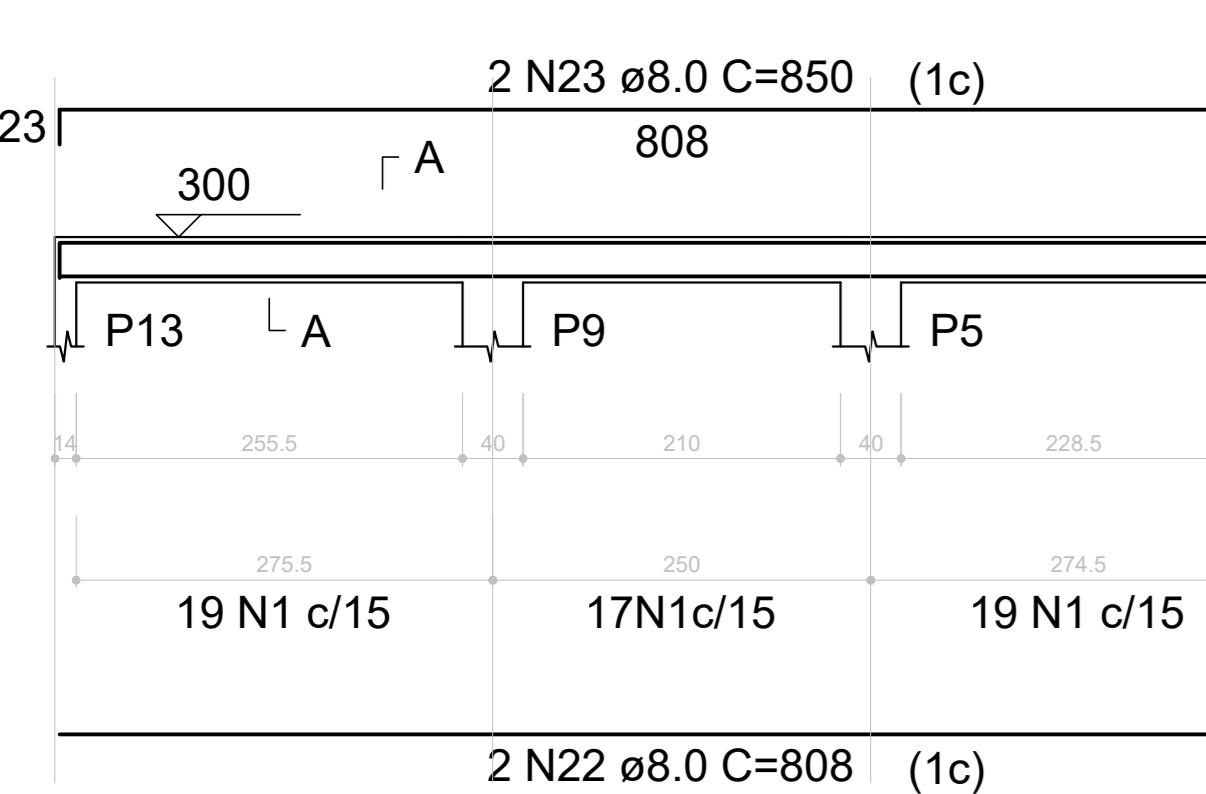
VT106 (15 x 30)
ESC 1:50



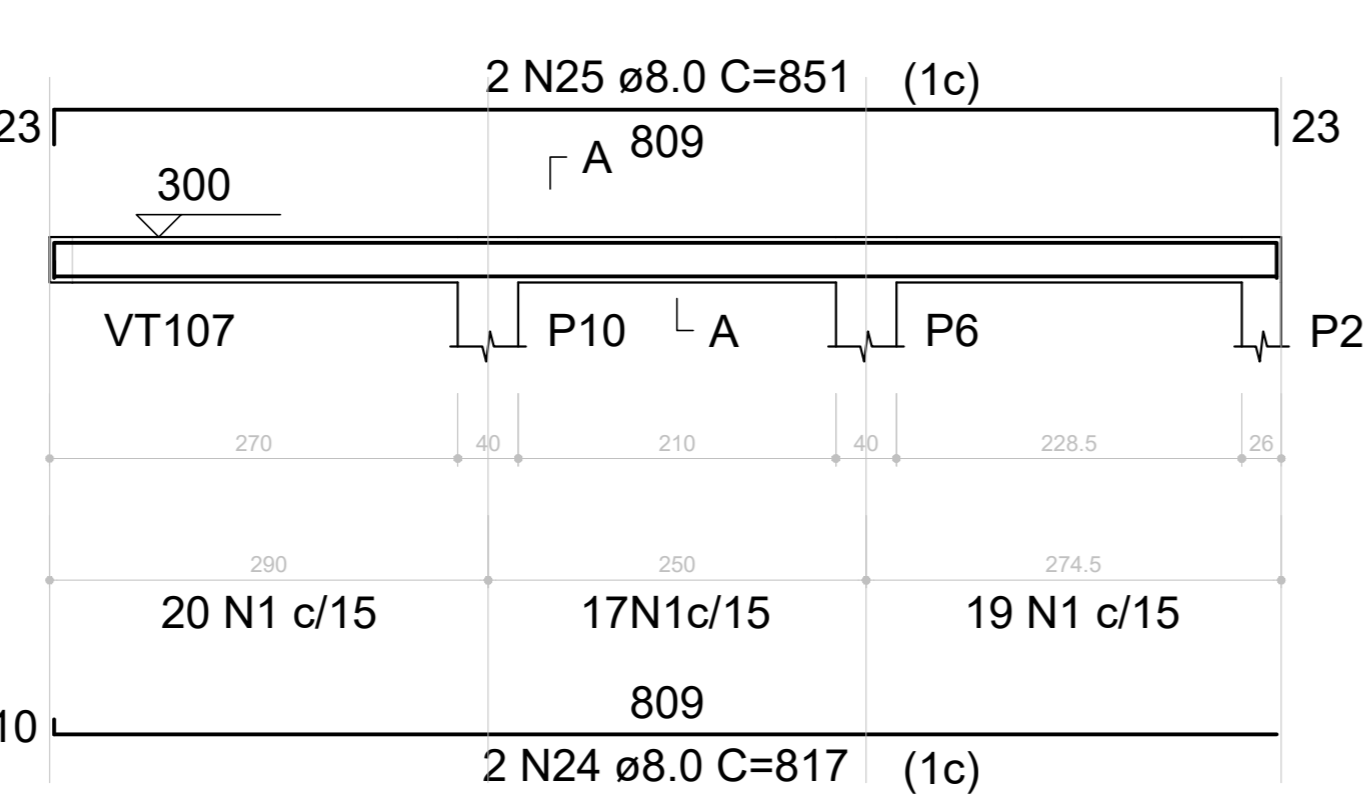
VT107 (15 x 30)
ESC 1:50



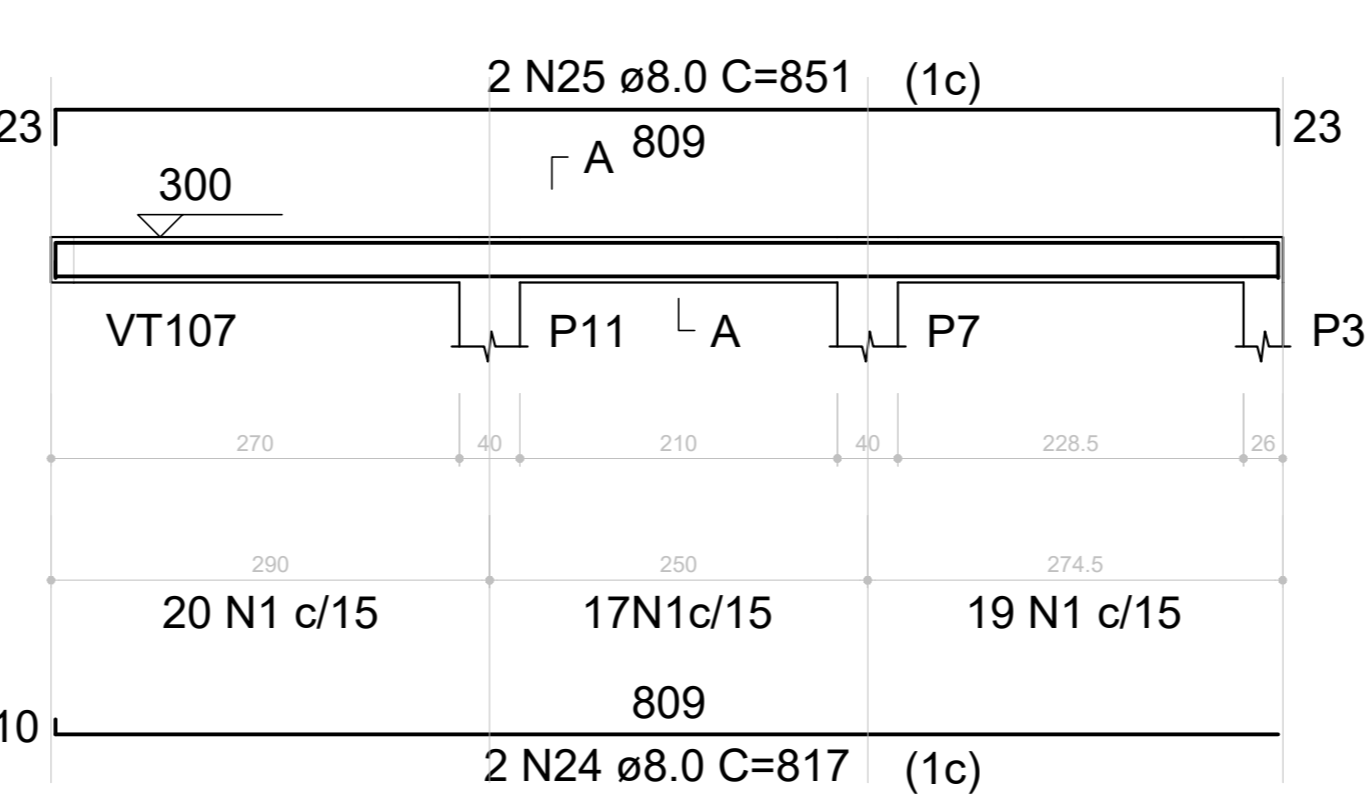
VT108 (15 x 30)
ESC 1:50



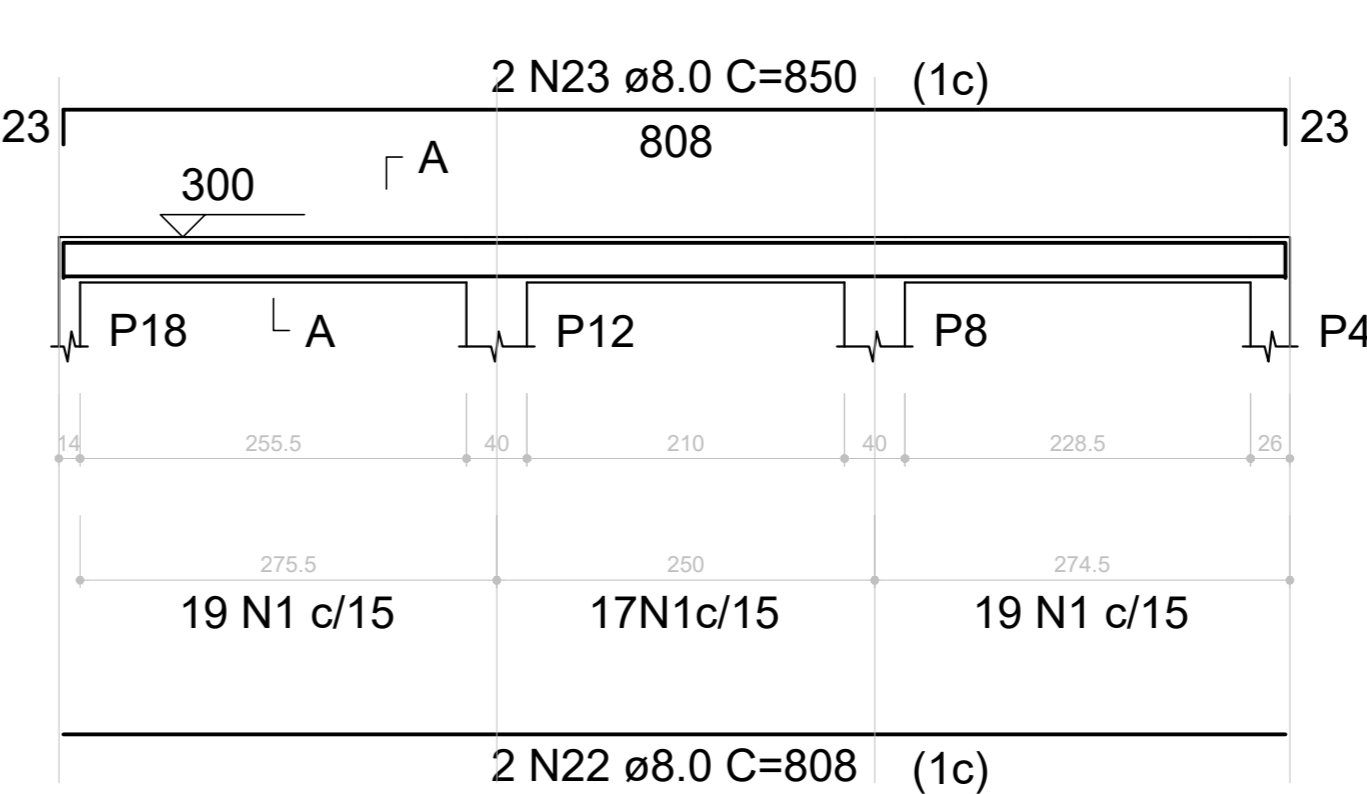
VT109 (15 x 30)
ESC 1:50



VT110 (15 x 30)
ESC 1:50



VT111 (15 x 30)
ESC 1:50



RELAÇÃO DO AÇO

AÇO	N	DIAM (mm)	QUANT	C.UNIT (cm)	C.TOTAL (cm)
V112					
V113					
V114					
V115					
V116					
VT101					
VT102					
VT103					
VT104					
VT105					
VT106					
VT107					
VT108					
VT109					
VT110					
VT111					

RESUMO DO AÇO

AÇO	DIAM (mm)	C.TOTAL (m)	PESO + 10% (kg)
CA50	8.0	578.9	251.3
CA60	12.5	78	82.6
CA60	5.0	656	111.2
PESO TOTAL (kg)			
CA50		333.9	
CA60		111.2	

Volume de concreto (C-25) = 5.23 m³
Área de forma = 87.14 m²

PREFEITURA MUNICIPAL DE LUZIÂNIA

SMDU

OBRA: REFORMA DA 1ª ESCOLA POLO MUNICIPAL REALINO CAIXETA
ENDEREÇO: DISTRITO RURAL DE MANIRATUBA, LUZIÂNIA-GO

PROPRIETÁRIO: PREFEITURA MUNICIPAL DE LUZIÂNIA

AUTOR DO PROJETO: TAYS LOPES VIEIRA - CREA 28523/D-DF

RESPONSÁVEL TÉCNICO: TAYS LOPES VIEIRA - CREA 28523/D-DF

DIREITOS AUTORAIS DESTES PROJETOS PERTENCEM AOS PROFISSIONAIS ACIMA CITADOS. É PROIBIDA A SUA REPRODUÇÃO, MODIFICAÇÃO E/OU ALTERAÇÃO CONFORME LEI 5.988 ART. 25.

FISCALIZAÇÃO E LICENÇA:	CREA/CAU:
OUTROS:	

FOLHA: 4/4 **CONTEÚDO:** PLANTAS, QUADROS E LEGENDAS **ÁREA:** INDICADA EM QUADRO

DATA: 04/2023 **DESENHO:** ISABELLE MORAES **ESCALA:** INDICADA **UNIDADE:** METROS